

East of Pontprennau Link Road LDP Strategic Site G

Autumn 2022



Liability and Disclaimer

While reasonable care has been taken in the preparation of this document to ensure that the information contained is accurate, this document, its content, names, text and images included in this document, are provided 'AS IS' and without warranties of any kind, either express or implied. To the fullest extent permissible pursuant to UK law, the County Council of the City and County of Cardiff ['The Council'] disclaims all warranties expressed or implied, including but not limited to implied warranties of reasonable care, satisfactory quality or fitness for a particular purpose and non-infringement of title.

The document contains guidance and notes on certain aspects of law as they might affect the average person. They are intended as general information only and do not constitute legal or other professional advice. It should not be relied on as the basis for any decision or legal action. The Council cannot accept liability for any loss suffered due to reliance on the contents of this document. The law is constantly changing so expert advice should always be sought.

To the extent permitted by applicable laws, no liability is accepted for any direct, indirect, incidental, special or consequential loss or damage to any user (whether arising in contract, tort including negligence or otherwise) arising out of or in connection with the use of this document.

The contents of this document shall not fetter the Council in the exercise of any of its statutory functions, including, without limitation to the generality of the foregoing, its functions as Local Planning Authority or Local Highway Authority.

For full details of all planning applications, including reports, decision notices and S106 agreements, please visit the planning pages of the Council's website at www.cardiff.gov.uk/dc.

It should be noted that developments identified as 'consented' may be subject to the signing of a S106 Agreement.

- LDP Proposals Map, Development Activity Map and Photographs – © Cardiff Council
- Planning Application Maps and Illustrations – © Associated Applicant

OS Maps: © Crown copyright and database rights [2022] Ordnance Survey 100023376

Introduction

Cardiff has eight Strategic Sites (containing 500 or more dwellings and / or significant employment uses), which have been allocated through the Local Development Plan (LDP) to help meet the need for new homes and jobs across the city:

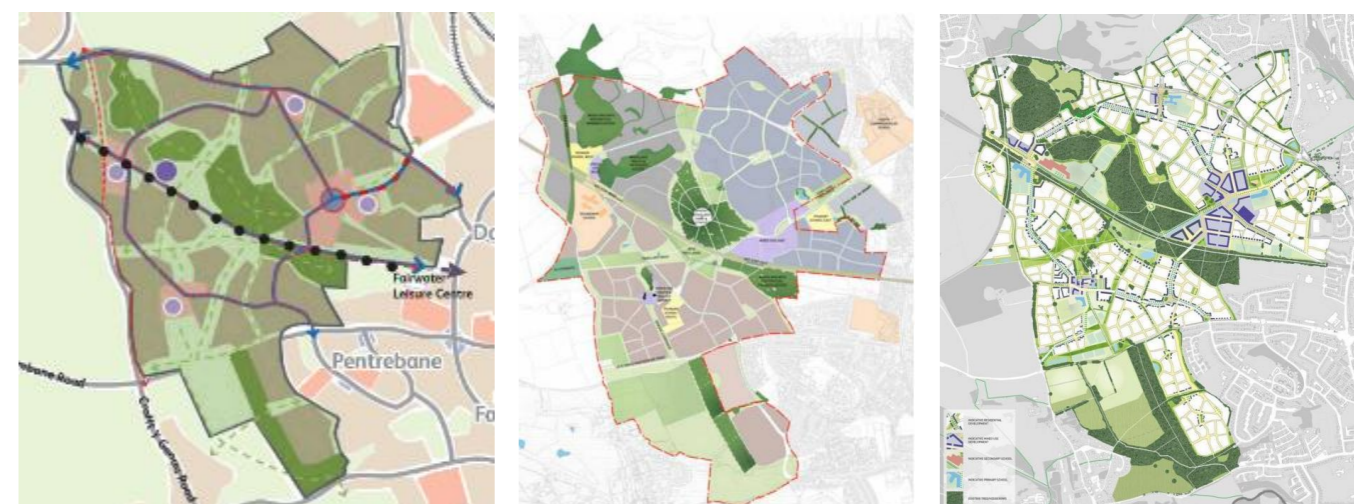


Strategic Site A:	<ul style="list-style-type: none"> • Cardiff Central Enterprise Zone / Regional Transport Hub • Circa 2000 homes
Strategic Site B:	<ul style="list-style-type: none"> • Former Gas Works, Ferry Road • Circa 500 homes, with associated community uses
Strategic Site C:	<ul style="list-style-type: none"> • North West Cardiff • Minimum 5,000 homes, with employment and other community uses
Strategic Site D:	<ul style="list-style-type: none"> • North of Junction 33 on M4 • Circa 2,000 homes, with community uses, employment and Park and Ride
Strategic Site E:	<ul style="list-style-type: none"> • South of Creigiau • Circa 650 homes, with associated community uses
Strategic Site F:	<ul style="list-style-type: none"> • North East Cardiff (West of Pontprennau) • Circa 4,500 homes, with employment and community uses
Strategic Site G:	<ul style="list-style-type: none"> • East of Pontprennau Link Road • Circa 1,300 homes, with associated community uses
Strategic Site H:	<ul style="list-style-type: none"> • South of St Mellons Business Park • Strategic employment site.

To help ensure that these new homes and jobs form part of well planned communities, the LDP sets out a 'master planning' approach to the delivery of the strategic sites, where supporting infrastructure, such as transport corridors, community facilities, green spaces and schools will be provided as part of the developments.

Recognising that sites of this size will take several years to design and construct, a series of monitoring documents have been produced to provide a regular summary of development activity. They include details of:

- **Planning Histories:** Where new applications have been received and which applications have been determined (consented),
- **Development Activity:** Which sites are currently under construction and an indication of how many homes have been completed,
- **Infrastructure Provision:** A summary of the supporting infrastructure that has been agreed through a S106 (legal) agreement and details of those infrastructure works and other associated projects that are in the pipeline, or are currently being undertaken.



Indicative Illustration of Master Planning Approach

The Planning Process

The design, development and delivery of Cardiff's Strategic Sites can be broadly broken down into six parts:

Part 1: The Local Development Plan

The Cardiff Local Development Plan (LDP) 2006-2026 sets out the policies that guide development across the City. Key Policies KP2A to KP2H set out a master planning approach to the delivery of the Strategic Sites and identify an indicative schematic framework and details of those items of infrastructure (e.g. highway and transportation works, schools, community facilities and open spaces) to be delivered alongside the new homes.

Part 2: Site Master Planning

Before submitting a planning application, a developer will produce a master plan for their site. This will show an overall layout for the whole of the development area and will demonstrate how their proposals are in line with the policies set out in the LDP. Recognising that it not possible to build sites of this size in one go, a phasing plan will also be produced which shows how the site will be divided into smaller areas for delivery.

Part 3: Pre-application Consultation

Where a developer is proposing a 'major development' (a housing development of 10 or more dwellings / over 0.5ha, or other developments of over 1000sqm floorspace or 1ha), there is a need for them to undertake a pre-application consultation with the public before submitting their planning application to the Local Planning Authority (LPA). The results of this consultation then forms part of their planning application.

Part 4: Planning Applications

There are three main approaches that might be taken here:

- 4A. The submission of an Outline Planning Application followed by a Reserved Matters Application(s)
- 4B. A Full Planning Application
- 4C. A Hybrid Planning Application

4A Outline and Reserved Matters Applications:

An 'outline planning application' allows for a decision to be made on the general principles of how a site will be developed before further work is undertaken on more detailed designs (these detailed designs are referred to as 'Reserved Matters'). As a minimum, an outline application will usually include information on the uses proposed for the development (e.g. houses), the amount of development proposed (e.g. up to 200 homes), an indication of the sites layout (this will relate back to the masterplan for the site), an indication of minimum / maximum sizes of the proposed buildings (e.g. height) and show where access points into the site will be located.

It is at the outline application stage that the developer will enter into a S106 Legal Agreement to either deliver (build) and / or financially contribute towards the delivery of supporting infrastructure (e.g. affordable housing, highway works, schools) as part of their development.

Following the granting of an outline application, a 'Reserved Matters Application(s)' sees the developer submit the more detailed information for their site. This will include, for example: Access – the positioning and treatment of routes for pedestrians, cyclists and vehicles; Appearance – what the buildings will look like in terms of house styles and use of materials; Landscaping – details of planting, green spaces and public spaces; Layout – the way in which buildings are positioned; Scale – the dimensions of each building.

A reserved matters application could be submitted for the whole site, or, if it is a larger development, separate reserved matters applications can be submitted for each of the smaller phases as they are progressed.

4B Full Planning Application

Where everything has been designed in detail from the outset, a developer may choose to submit a full planning application. This provides approval in one planning consent as opposed to taking the outline / reserved matters route. In this scenario, the S106 Agreement would be attached to the full planning permission.

4C Hybrid Application

If a developer has full details for one part of their site and outline information for the remainder, they can submit a 'hybrid application'. The planning applications description would identify which part of the site was seeking full permission (e.g. phase 1) and which parts relate to the outline element of the application (e.g. phases 2-5). As identified above (see 4A), the outline elements of the consent would be subject to future reserved matters applications.

Part 5: Discharge of Conditions

Once planning permission has been granted (consented), there will be a number of 'planning conditions' (attached to the permission) that a developer will need to discharge (this might include for example needing to provide a sample of external finishing materials). Some of these might be 'pre-commencement conditions', that will need to discharge before work can start onsite, whilst others will need to be discharged at certain trigger points while the site is being built. To discharge each condition, a 'discharge of condition application' needs to be submitted to and approved by the Local Planning Authority.

Part 6: Implementation / Infrastructure Provision:

Once all of the permissions have been granted and relevant (pre-commencement) planning conditions discharged, the developer will then be able to start building their site. At various trigger points and thresholds during the development (as identified in the S106 Agreement), they will also start building the supporting infrastructure (e.g. new roads, schools, open spaces) and / or make payments to the Council towards infrastructure provision.

Local Development Plan Policy KP2G

The Local Development Plan sets out the framework for the development of the strategic sites.

Through Policy KP2G it identifies that:

Land is allocated East of Pontprennau Link Road, as defined on the Proposals Map, for a housing-based scheme of a minimum of 1,300 homes with associated community uses, together with essential, enabling and necessary supporting infrastructure which will be delivered in a phased manner with specific details formally tied into planning consents including:

Essential/ Enabling Infrastructure

Transport & Highways:

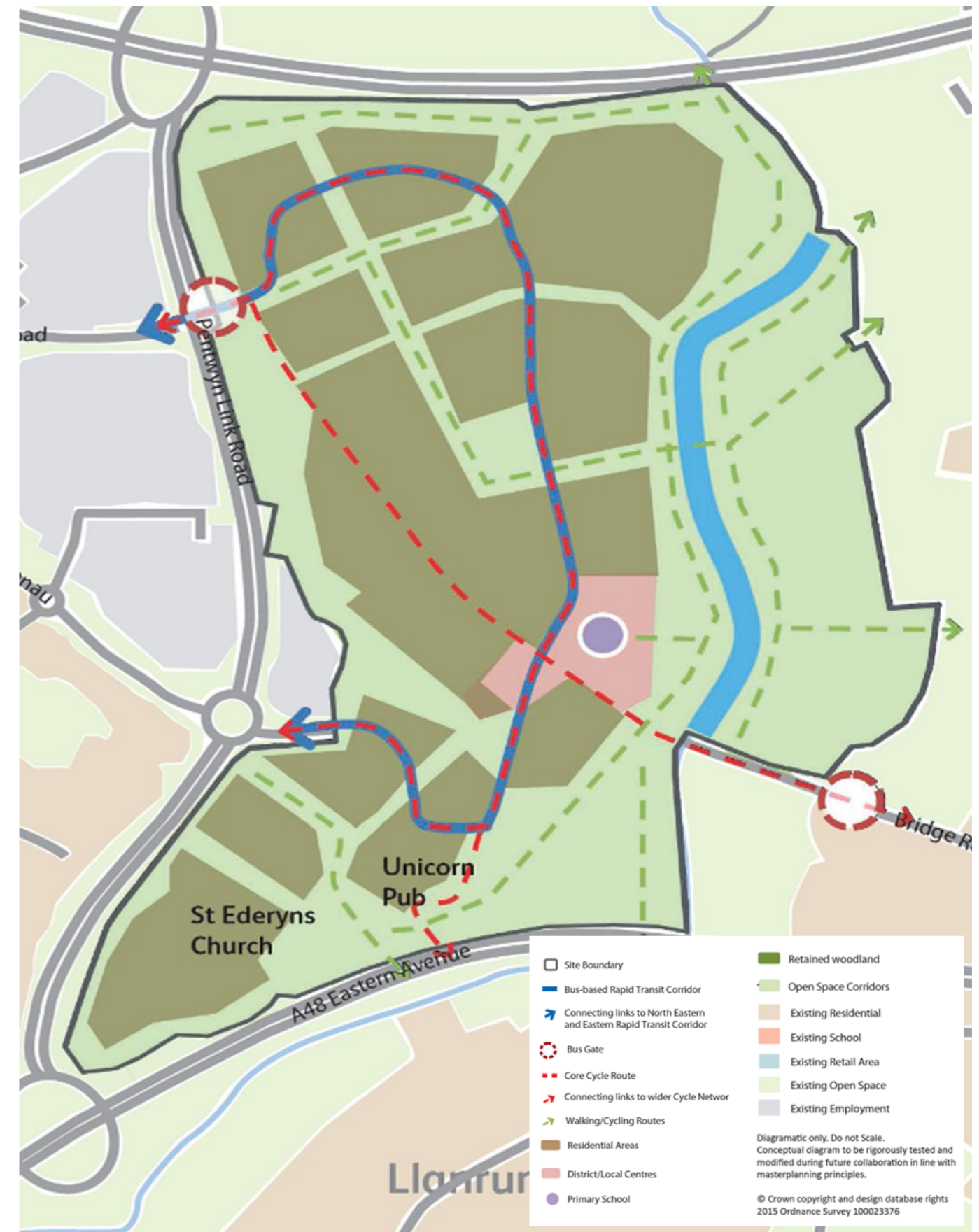
- Provision of new bus-based Rapid Transit Corridors through the site including links to the Local Centre and provision of Bus Gates at St Mellon’s Road at the north western edge of the site and Bridge Road to the south east of the site;
- Off-site infrastructure including bus priority measures to develop bus-based Rapid Transit Corridors integrating with the site, the Eastern Bus Corridors and other routes within the North Eastern/Eastern Rapid Transit Corridor including services linked to Strategic Site F, facilitating transfer/ improving interchange facilities to Rhymney Line rail services at Llanishen Station and Thornhill Station, and, employment facilities at St Mellon’s Business Park and Strategic Site H;
- Off-site enhancements including bus priority measures to the Eastern Bus Corridor; Extend bus networks and increase the frequency and reliability of services to serve the site with public transport options for a wide range of journeys including a combination of limited stop and local bus services taking account of links with Strategic Site F: Provide a bus-only route along Bridge Road.

Walking and Cycling:

- On and off-site measures to provide a network of high quality, safe, attractive and convenient routes within the site and linking to key local services, facilities and destinations including employment in Pontprennau, Pentwyn and Cardiff Gate Business Park;
- Improve walking/cycling access at junction of Church Road/ A4232/Heol Pontprennau;
- Provide a safe, attractive and convenient link from the site to the Rhymney Trail;
- Enhance subway under A48, south of St Edeyrn’s Church; Provide cycle/pedestrian link between the subway under the A48 and Mill Lane, Llanrumney;
- Upgrade Rhymney Trail to provide shared pedestrian/cycle route between subway under A48, south of St Edeyrn’s Church and the subway west of Pentwyn interchange.

Necessary Infrastructure:

- 1 centrally located Local Centre linked to rapid transit infrastructure and school facilities including Primary Care facility (Branch Surgery linked to Strategic Site F), multifunctional community facility, and financial contribution to upgrading of Pentwyn and Pontprennau Leisure Centres; Education-1 new Primary School located in or adjacent to the local Centre and financial contribution to provision of Secondary School at Strategic Site F;
- Minimum of 7.9ha Open Space including 3.9ha of formal recreation, 2 playgrounds, 1 teen facility, and 1x 26 plot allotment site.



Strategic Site G LDP Schematic Framework

SITE G | St Edeyrns Village

Overview of Planning Applications

Outline Application:

13/00578/DCO | Up to 1020 homes | Consented ID: 1

Reserved Matters Applications:

14/02556/MJR | Phase 1 | 452 Homes | Completed*¹ ID: 20

17/00488/MJR | Phase 2 | 130 Homes | Completed*² ID: 55

19/01733/MJR | Phase 2 | 57 Homes | Completed ID: 61

17/01787/MJR | Phase 3 | 244 Homes | Completed ID: 43

19/02286/MJR | Phase 3 | 4 Homes | Completed ID: 66

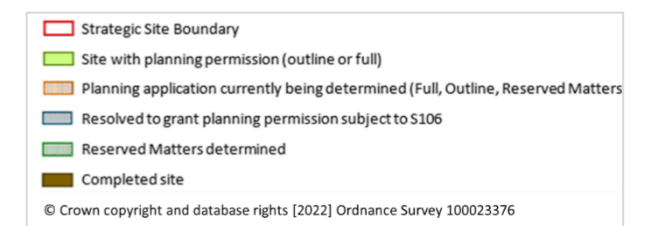
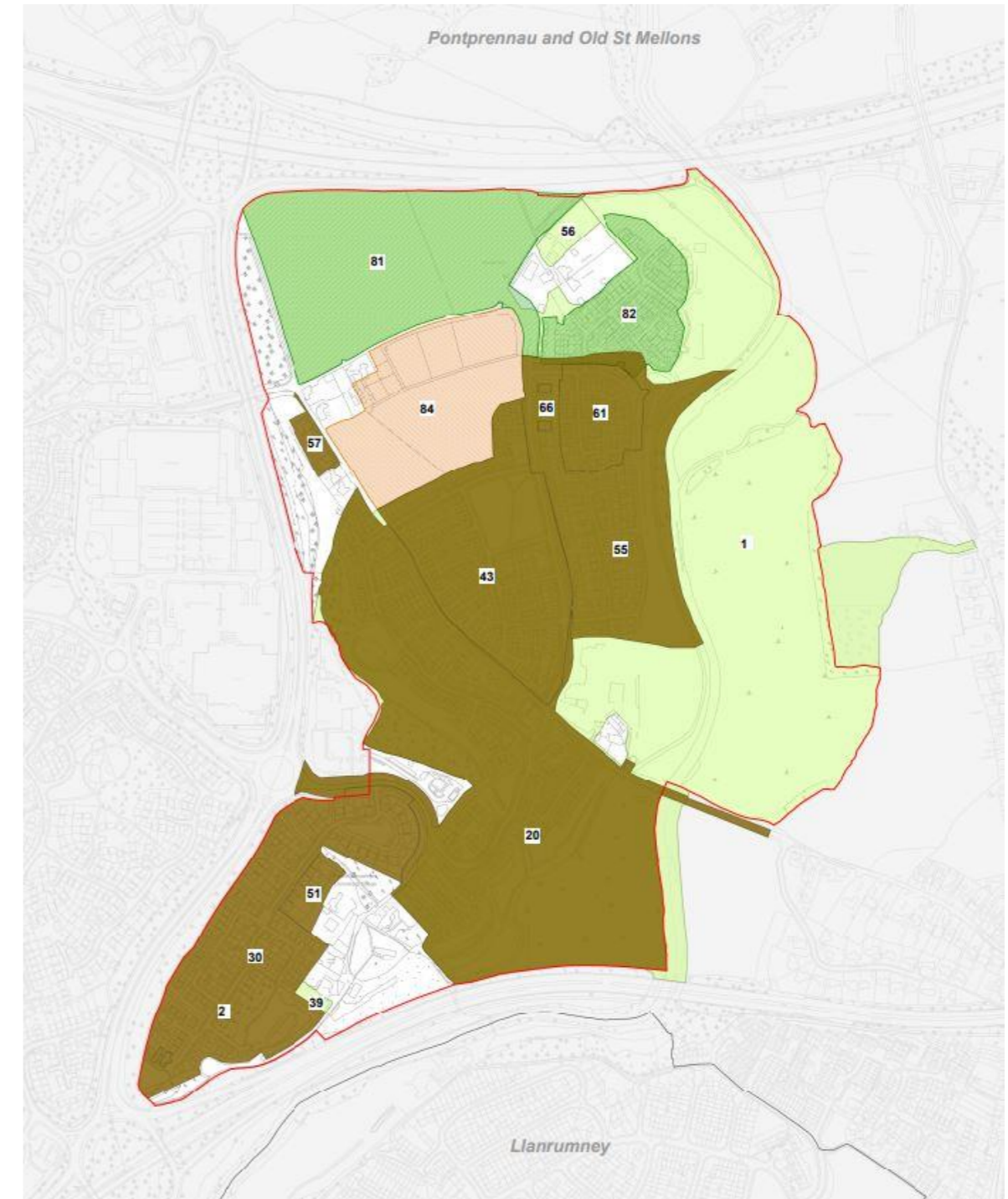
19/03238/MJR | Phase 5 | 127 Homes | Under Construction ID 82

19/03205/MJR | Phase 6 | 186 Homes | Under Construction ID: 81

19/03097/MJR | Primary School | Consented

*¹ A section of 14/02556/MJR has been superseded by 17/01787/MJR.

*² A section of 17/00488/MJR has been superseded by 19/01733/MJR.



Outline Planning Application | 13/00578/DCO

St Edeyrns Village | Up to 1020 Homes | Consented

Site Description:

Situated to the east of the A4232 Pontprennau Link Road, this development covers an area of around 153 acres and will contain up to 1020 homes.

The scheme will include affordable homes, a primary school, a village centre (with retail, employment and community uses), a riverside park, allotments and a community orchard.

Infrastructure Provision:

In addition to the infrastructure that is being provided by the developer (as above), there will also be a series of financial contributions towards affordable housing, bus services, highway improvements and an extension to the Rhymney Trail, that will be paid to the Council at specific trigger points during the construction of the development.

Outline Planning Permission:

Outline planning permission for St Edeyrn's Village (up to 1020 homes) was granted in 2014.

The development will be built in a series of phases and the developer will submit a reserved matters application prior to bringing forward each part of the site.



Indicative Masterplan



Indicative Illustration of House Styles

Reserved Matters Application | 14/02556/MJR

Phase 1 | 452 Homes | Persimmon Homes | Completed

Site Description:

Located at the entrance to St Edeyrns Village, this part of the development will contain 452 homes*¹. It will include the delivery of onsite affordable housing, green spaces and a village centre containing retail and community uses.

The reserved matters application looked at details of non-strategic access, appearance, landscaping, scale and site layout. It was approved in May 2015.

**¹ A section of 14/02556/MJR has been superseded by 17/01787/MJR.*

Development Activity:

Construction work started in spring 2015. The properties to the south of Bridge Road were completed in 2020/21.



Site Photos



Indicative Site Layout Plan

Reserved Matters Application | 17/00488/MJR

Phase 2 | 130 Homes | Charles Church | Completed

Site Description:

Located adjacent to the Riverside Park at the east of the site, this part of the development will contain 130 homes*¹. It will include the delivery of onsite affordable homes and will provide points of entry into the Riverside Park.

The reserved matters application looked at details of appearance, landscaping, layout and scale. It was approved in June 2017

**¹ A section of 17/00488/MJR has been superseded by 19/01733/MJR.*

Development Activity:

Construction work started in early 2018. The properties were completed in 2020/21.



Site Photos



Indicative Site Layout Plan

Reserved Matters Application | 19/01733/MJR

Phase 2 | 57 Homes | Persimmon Homes | Completed

Site Description:

Located adjacent to the Riverside Park at the east of the site, this part of the development will contain 57 homes.

The reserved matters application looked at details of appearance, landscaping, layout and scale. It was approved in August 2019.

Development Activity:

The properties were completed in 2020/21.



Indicative Illustration of House Styles



Indicative Site Layout Plan

Reserved Matters Application | 17/01787/MJR

Phase 3 | 244 Homes | Persimmon Homes | Completed

Site Description:

Situated towards the centre of the site, this part of the development will contain 244 homes. It will include the delivery of onsite affordable housing and a public open space containing a children's play area.

The reserved matters application looked at details of appearance, landscaping, layout and scale. It was approved in December 2017.

A second reserved matters application (19/02286/MJR) changed two detached properties to two semi-detached properties.

Development Activity:

The properties were completed in 2021/22



Site Photos



Indicative Site Layout Plan

Reserved Matters Application | 19/03238/MJR

Phase 5 | 127 Homes | Persimmon Homes | Under Construction

Site Description:

Located to the north east of the site, this part of the development will contain 127 homes.

The reserved matters application looked at details of appearance, landscaping, layout and scale. It was approved in May 2020.

Development Activity:

At autumn 2022, around 125 properties have been completed/are under construction.



Indicative Illustration of House Styles



Indicative Site Layout Plan

Reserved Matters Application | 19/03205/MJR

Phase 6 | 186 Homes | Persimmon Homes | Under Construction

Site Description:

Located to the north west of the site, this part of the development will contain 186 homes.

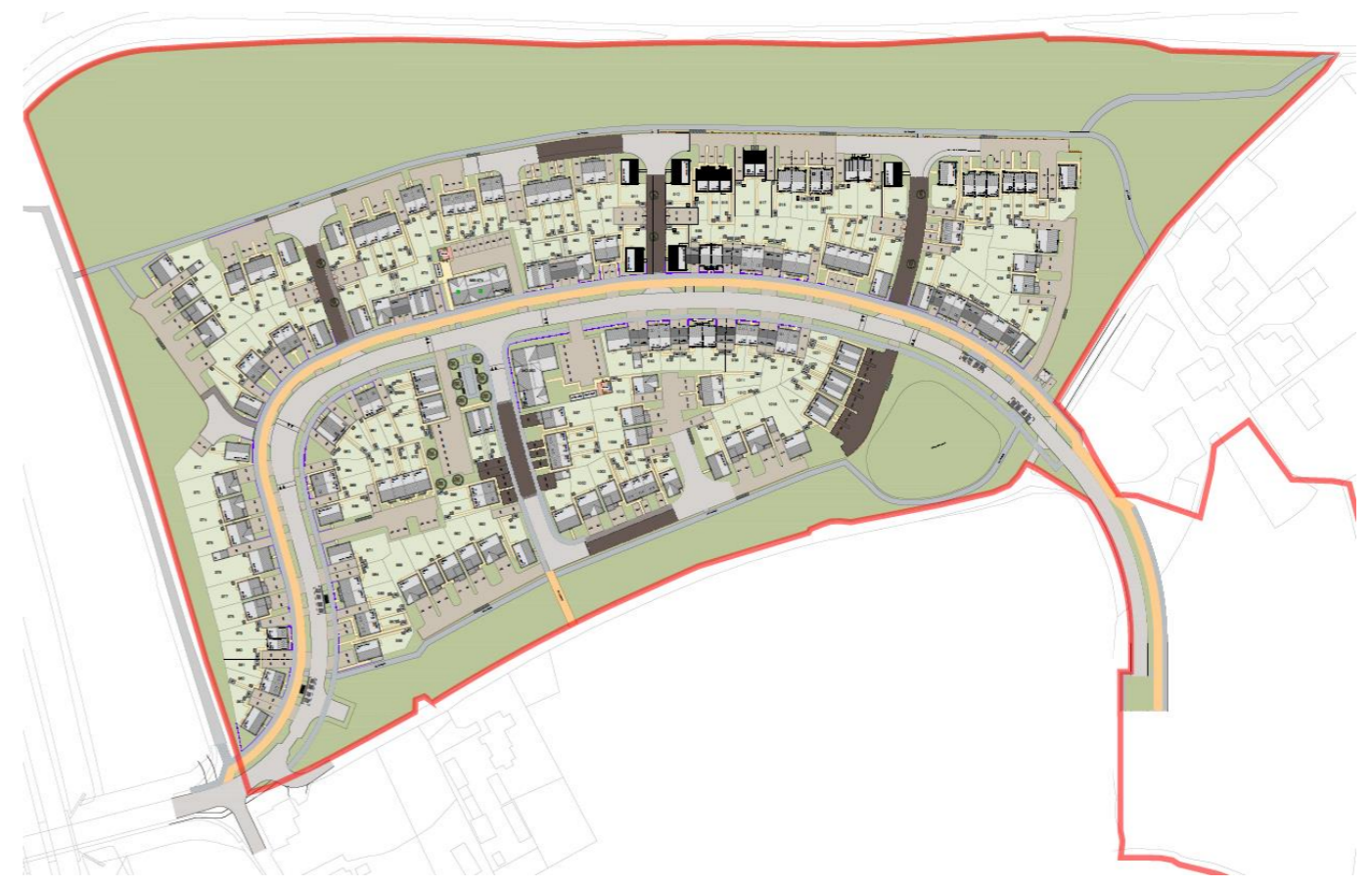
The reserved matters application looks at details of appearance, landscaping, layout and scale. It was approved in October 2020.

Development Activity:

At autumn 2022, around 90 properties were under construction.



Indicative Illustration of House Styles



Indicative Site Layout Plan

Reserved Matters Application | 19/03097/MJR

Primary School | Consented

Site Description:

Located towards the centre of the site, this new primary school will broadly comprise of 210 places (1 form entry), with a 26 place nursery, a nurture room and a community centre linked to the school. It will include a series of hard and soft outdoor play spaces, together with car and cycle parking facilities.

The reserved matters application looked at details of non-strategic access, appearance, landscaping, scale and site layout. It was approved in June 2021.

Development Activity:



Indicative Illustration of school



Indicative Site Layout Plan

Infrastructure Delivery

As part of the delivery of the outline planning permission for St Edeyrns Village (13/00578/DCO), the developer has entered into a Section 106 Agreement to provide new infrastructure and to make improvements to existing facilities. Some of this infrastructure will be provided onsite and will be built by the developer during the relevant phases of the development, whilst other contributions will take the form of financial payments made to the Council:

S106 Category	Description:
Affordable Housing	The developer will be providing 12.5% onsite affordable housing as part of the development and will be contributing a further £9.2 million towards the provision of affordable housing across the city.
Bus Contribution	The Developer will be contributing around £2 million towards the cost of providing bus services to the site during the early years of development.
Highway Contribution	The developer will be contributing £312,000 towards an extension to the bus corridor on Eastern Avenue and a northbound bus lane on the A4232.
Rhymney Trail Link contribution	A sum of around £386,000 will be contributed towards an extension to the Rhymney Trail (for walking and cycling).
Residential Travel Plan	The developer will be preparing a Travel Plan for the site and will be providing one bus pass per dwelling that will be valid for one year.
Traffic Regulation Orders Contribution	This is a contribution of around £6,000 that will be used towards the implementation of Traffic Regulation Orders relating to the site.
Primary School and Community Facility	A new primary school, which will include an element of community facility provision, will be provided as part of the development.
Allotments	The developer will be providing 34 allotment plots and an associated amenity building as part of the development.
Community Orchard	The developer will be providing a community orchard as part of the development.
Open Spaces	The developer will be providing a series of open spaces (with an associated management scheme) as part of the development.
Riverside Park	The developer will be creating a riverside park, which will include the provision of a new footbridge across the river Rhymney as part of the development.
Sustainable Urban Drainage	The developer will be providing a sustainable urban drainage scheme as part of the development.

