



Roath Park Cycle Route

Roath Recreation Ground improvements

Consultation Outcome and Update



Roath Park Cycle Route – project update

Roath Recreation Ground improvements

Consultation update

The Council recently consulted on improvements within the playing field on [Roath Recreational Ground](#) and on [Ninian Road](#) to improve [cycle and pedestrian accessibility](#) within the area.

The key findings from the recent consultation are provided within this document along with updated concept plans and proposals.

Additional measures are being proposed on Ty Draw Road and Pen-Y-Wain Place. More information is provided within this document.

A link to the consultation report is provided at the end of this document and we would like to hear your views on the updated proposals.

We will use any feedback received to inform the designs being progressed and information on [How to Respond](#) is provided at the end of this document, along with [Frequently Asked Questions](#).



Roath Park Cycle Route

Roath Recreation Ground improvements

Initial Consultation Key Findings

A public consultation was undertaken in March 2022 to gain feedback on the proposed improvements within Roath Recreation Ground and Ninian Road. Around 900 letters were sent to residents and businesses in the area near this proposal. In total, 257 responses were received via the survey link to the consultation, as well as a small number of emails and a petition in reference to the priority narrowings on Ty Draw Road.

The main points raised from this consultation are as follows.

The majority of the respondents support the proposed measures and over half the respondents support the cycle track through the park with a third of the respondents supporting the cycle path but thinking it should be on the road.

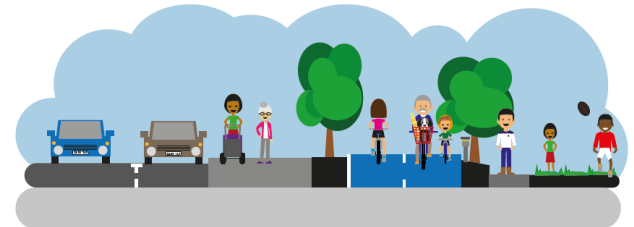
Many believed the proposed measures will be beneficial and will either encourage them to walk or cycle, or will improve access for those who currently walk and cycle.

Some concerns were raised in respect of pedestrians and dogs crossing the cycle path to get to the park and the loss of green space.

There were some objections to closing off Alder Road and some concerns were raised about the Wellfield Road / Ninian Road junction and delays at the traffic signals.

We have reviewed the feedback received and will be seeking address relevant concerns as part of the on-going design process.

If you have further comments, we would like to know your views in respect of the **Roath Recreational Ground** phase. Information on **how to respond** and a link to the **full consultation report** is detailed at the end of this document.



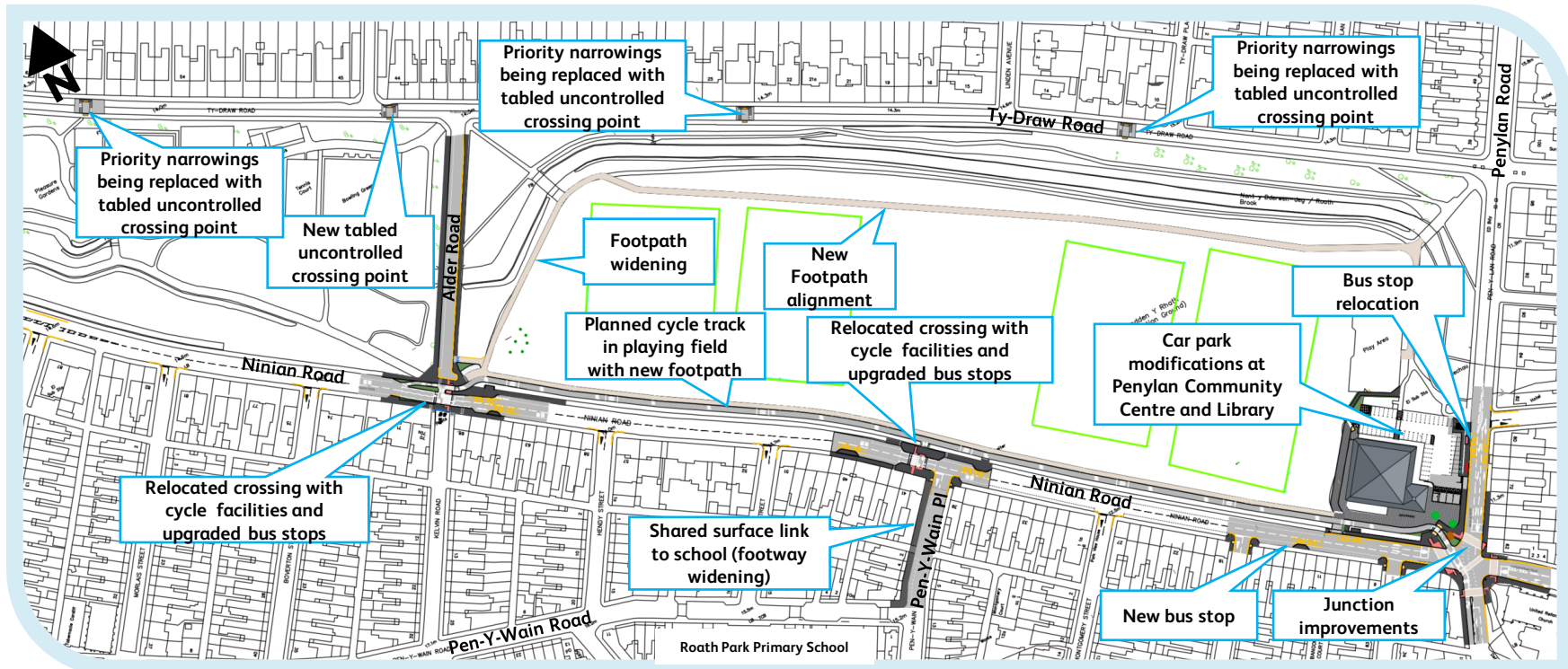
Roath Park Cycle Route

Roath Recreation Ground improvements

Consultation update - overview

The improvements within Roath Recreation Ground, Ninian Road and the wider route will provide opportunity to connect to other cycle routes in the future, whilst providing key benefits such as to promoting **sustainable and active travel** to **schools**, employment, connections to **public transport**.

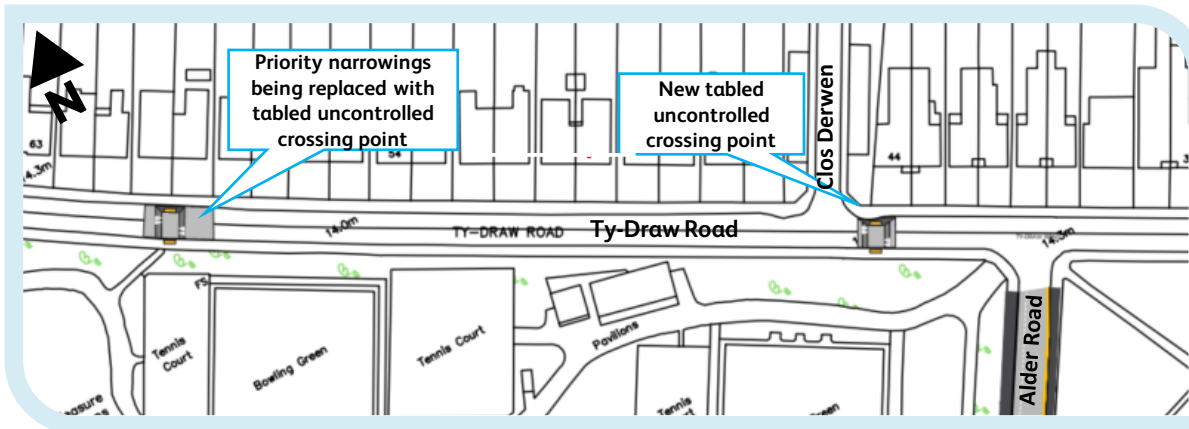
An updated scheme overview plan so shown below. Additional improvements can be seen on Ty Draw Road and Pen-Y-Wain Place.



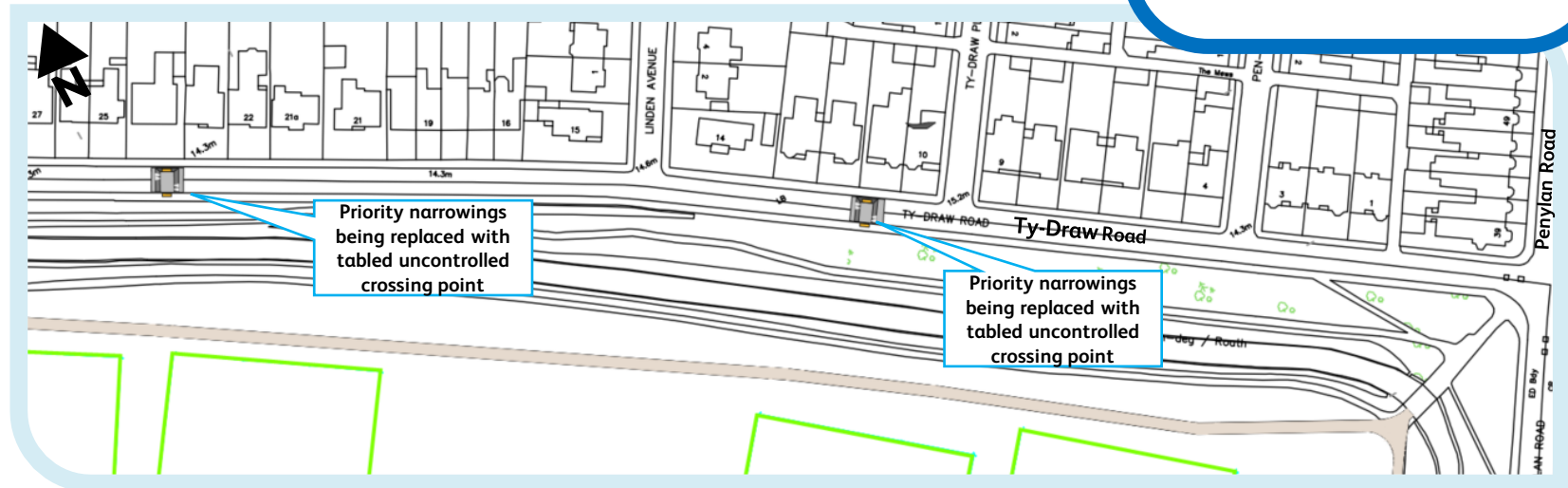
Roath Park Cycle Route

Roath Recreation Ground improvements

Consultation update - Ty Draw Road



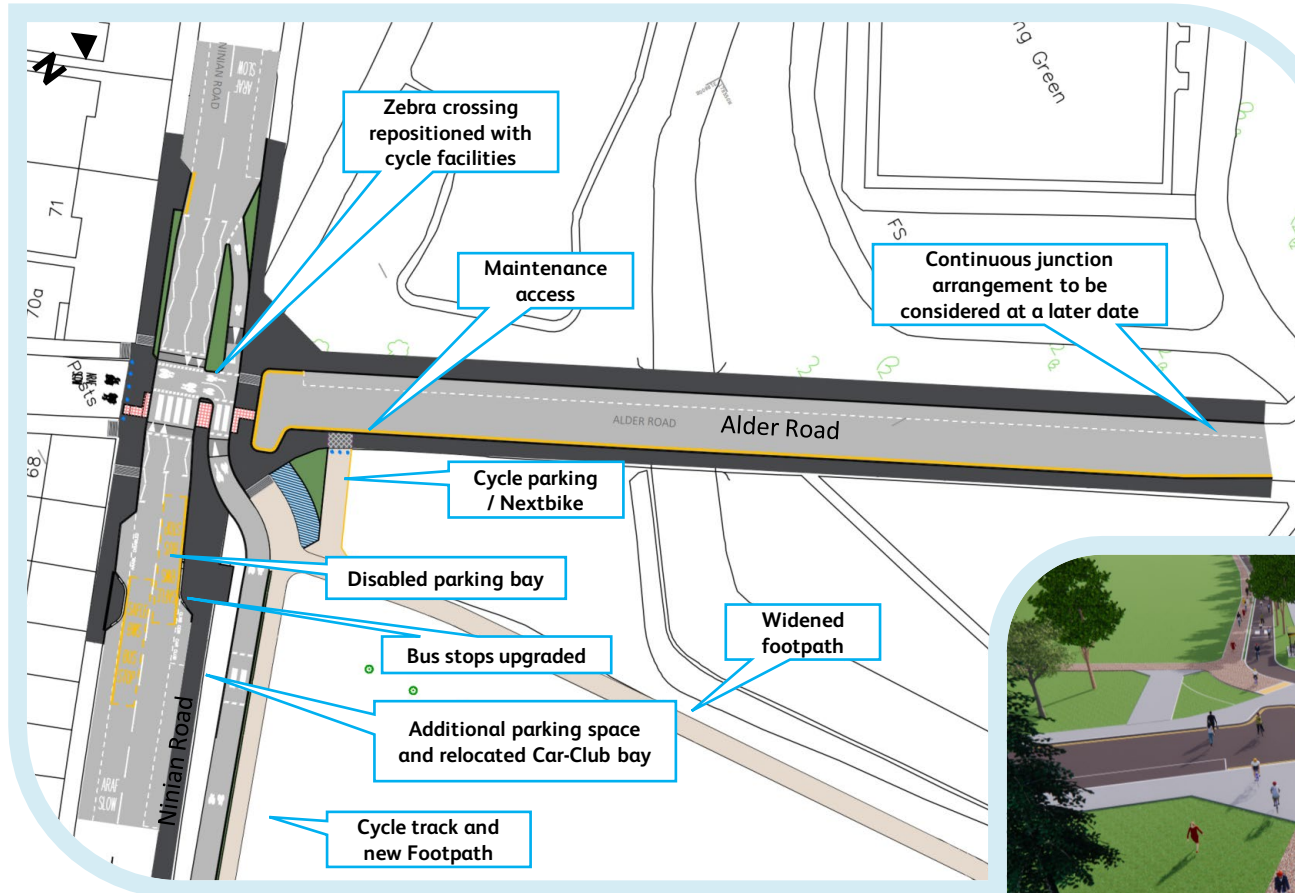
From feedback provided and subsequent investigation, it is proposed to replace the existing three sets of priority narrowings on Ty Draw Road with four tabled uncontrolled crossing points. Ty Draw Road is a planned Secondary Cycle Route as part of the draft Active Travel Network Map and these measures will make the road more conducive to Active Travel.



Roath Park Cycle Route

Roath Recreation Ground improvements

Consultation update - Alder Road area



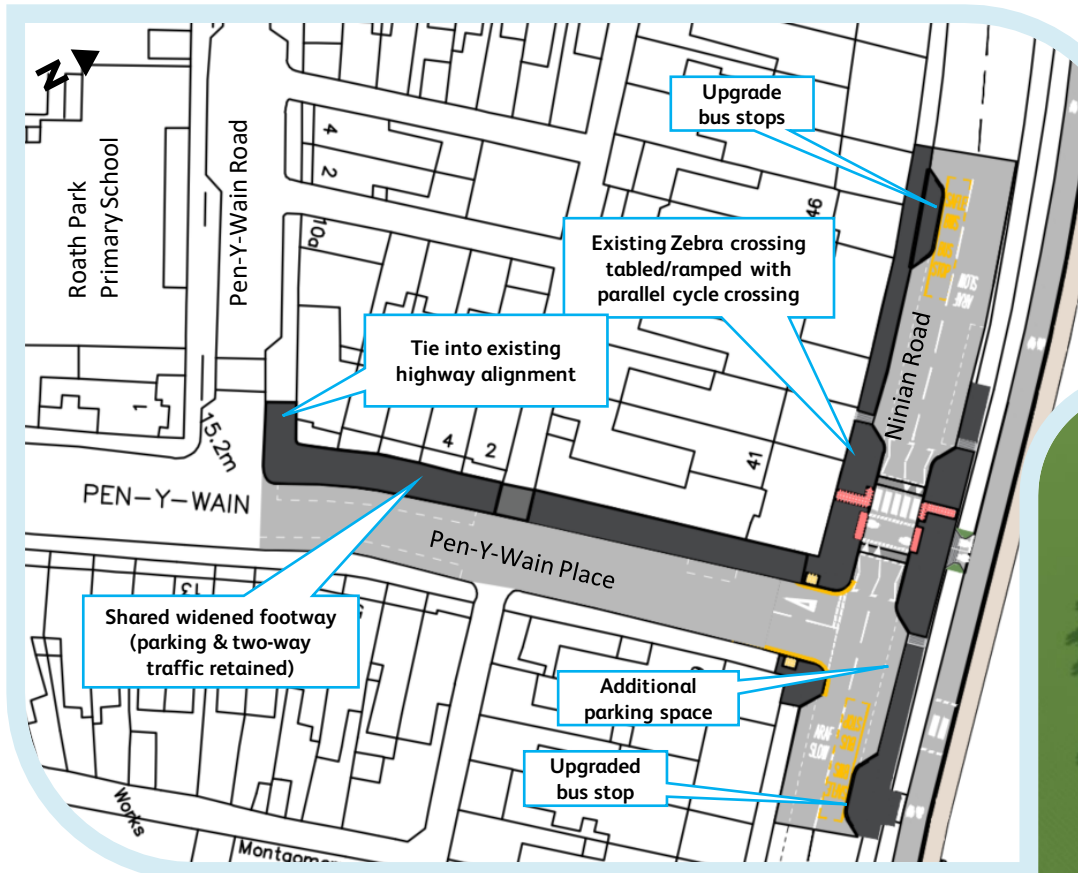
Alder Road junction improvements will include moving and upgrading the existing tabled zebra crossing, repositioning / improving bus stops and closing off Alder Road at the western end to remove potential vehicle / cycle conflict.



Roath Park Cycle Route

Roath Recreation Ground improvements

Consultation update - Pen-Y-Wain Place area



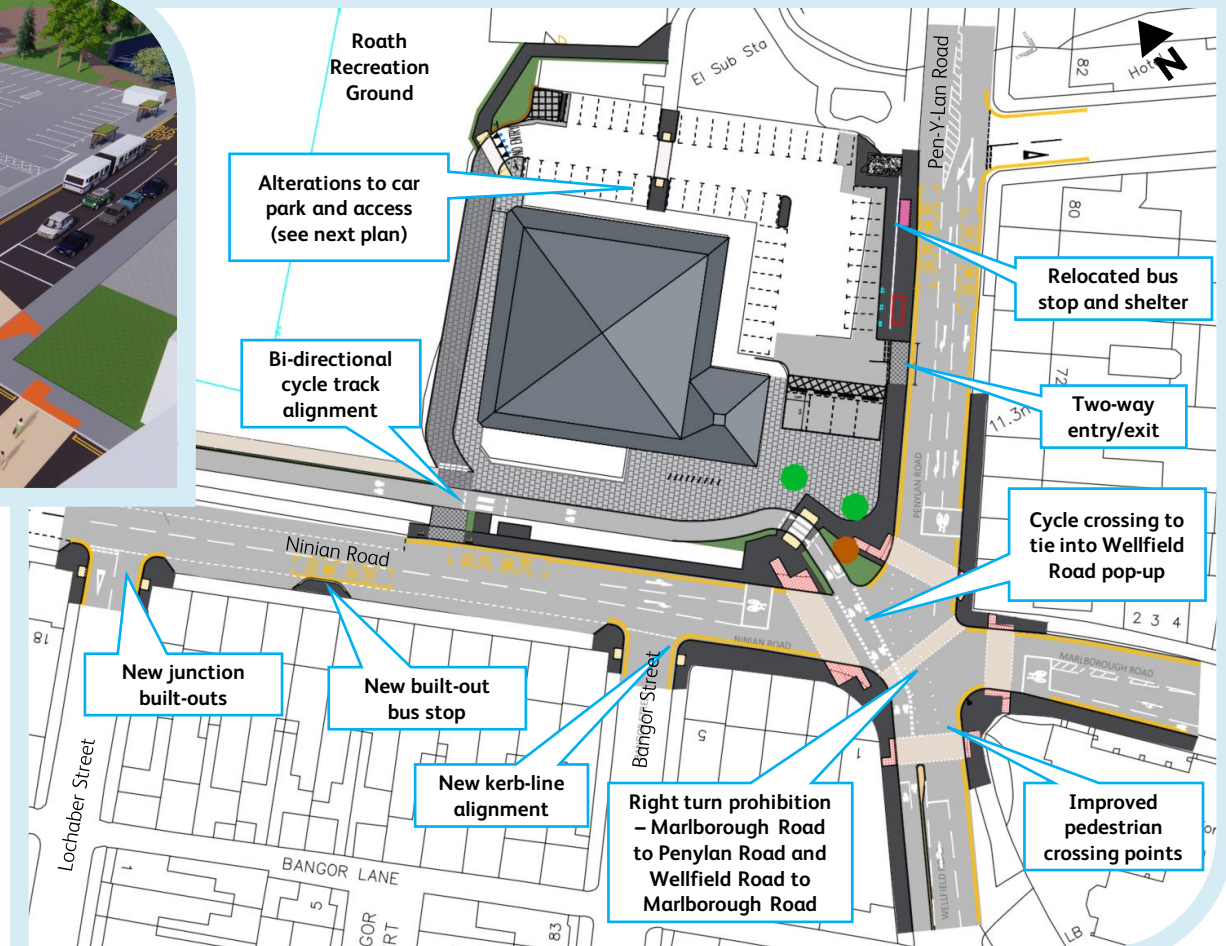
The existing zebra crossing near Pen-Y-Wain Place will be upgraded to a tabled crossing with a parallel cycle crossing. This will improve access to Roath Park Primary School. A shared footway is being developed between Ninian Road and Roath Park Primary School.



Roath Park Cycle Route

Roath Recreation Ground improvements

Consultation update -Ninian Rd / Penylan Rd junction

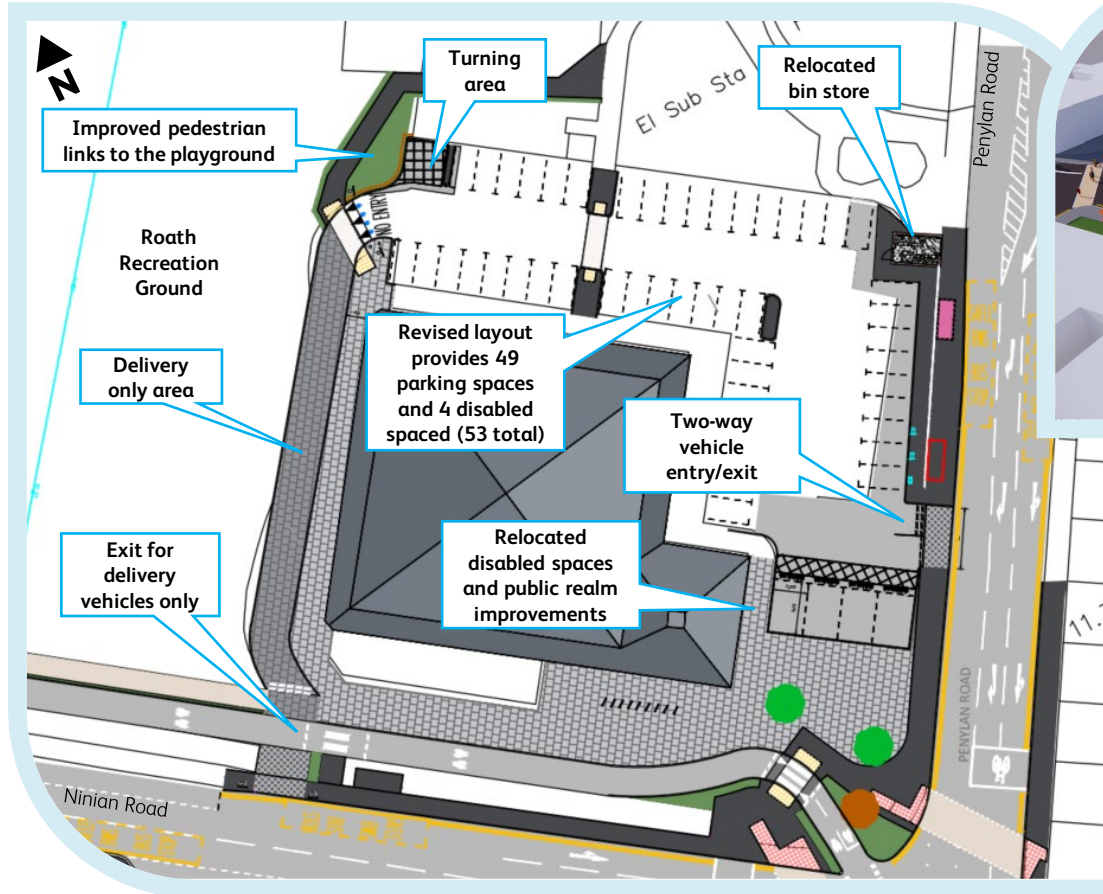


Access improvements are proposed at the Wellfield Road / Penylan Road junction to connect the Roath Recreation Ground improvements to the Wellfield Road pop-up cycleway.

Roath Park Cycle Route

Roath Recreation Ground improvements

Community Centre car park area



To accommodate the cycle track, access to the Community Centre and the car park layout will be changed.

A two-way circulation is proposed with only delivery vehicles being permitted to exit via Ninian Road. This will reduce the likelihood of vehicle/cycle conflict.



Roath Park Cycle Route

Roath Recreation Ground improvements

How to respond

Please respond to this consultation update using this survey form: [HERE](#)

Or copy and paste the following URL: <https://online1.snapsurveys.com/db753y>

This will allow you to make formal comments in response to this consultation update.

Alternatively, email transportprojects@cardiff.gov.uk

or write to Transport Programme Team, County Hall Room 301, Cardiff, CF10 4UW.

This consultation update will remain open until 06/01/2023



All responses will be reviewed and be used to inform the scheme's development. Changes may be applied to the plans shown as a result of the detailed design process, or from other feedback received during the engagement or design process.

Responses to the recent consultation about the proposals are available within the Consultation Report which is available via www.cardiff.gov.uk/transportprojects using the 'previous consultations' link and selecting the scheme title. Following the publication of the Consultation Report and this Consultation Update, the project will then be designed in detail and implemented, subject to approval and funding.

Please note that only feedback and questions relating to this project will be considered or acted upon. If you have any feedback relating to other Council Services, please visit www.cardiff.gov.uk

We will also be unable to respond to individual responses – however all responses will be included within the Consultation Report which will be available shortly after the consultation close date. No personal information will be shared.



Roath Park Cycle Route

Roath Recreation Ground improvements

Frequently Asked Questions

What are you consulting on exactly? We want to know your views in respect of the updated proposals for Roath Recreational Ground and along Ninian Road, including the additional plans for Ty Draw Road and Pen-Y-Wain Place.

What improvements will be made at the Wellfield Road / Ninian Road junction? The Council is planning improvements to the junction for pedestrians and cyclists that integrate with the existing pop-up cycle route on Wellfield Road and include changes to Community Centre car park. As the signal staging will be updated to accommodate a cycle crossing, certain turning movements will be prohibited. This will help the operation of the junction and reduce congestion. These will form part of the legal Traffic Regulation Order (TRO) process.

What about displaced traffic due to banned turning movements at the junction? Traffic surveys have identified low turning movements from Wellfield Road into Marlborough Road and from Marlborough Road to Penylan Road during peak times. Through modelling, we have considered a number of permutations and on balance, the chosen turning movement prohibitions assist in providing the best capacity and performance for the junction. It is likely that the minor displacement of traffic associated with the proposed option (with the proposed turning movement bans), would outweigh any negative impact any alternative options would create. The destinations of the displaced traffic would also vary, so it is likely that any displaced traffic during the AM or PM peaks will be negligible.

What will happen to vehicle parking in the area or as part of the wider route plans? The proposals being developed for the wider route will impact on on-street parking. The Council has been rolling out changes to parking for similar areas on a zonal basis. These parking schemes enable more resident parking and controlled limited waiting parking to reduce commuter parking and improve parking opportunity for businesses and residents. There are no set plans as part of this particular consultation, but plans will be provided in future for consideration. Some zones may be delivered as part of the cycleways being developed or in isolation to address local issues or include Pay and Stay parking. These will form part of a legal Traffic Regulation Order (TRO) process.

Will I have to pay for parking? Where zonal parking is being introduced, a mixture of resident only permits, limited waiting and pay and stay parking will be introduced. There will be opportunity for free parking, however this will be for a limited amount of time. More information about permit schemes and pay and stay parking is available on the Council's website.



Roath Park Cycle Route

Roath Recreation Ground improvements

Frequently Asked Questions (continued)

Why are you proposing more cycle facilities? It is important to improve the air quality in Cardiff as soon as possible. To support this, it is important to encourage active travel and sustainable travel throughout Cardiff. The improvement of cycleways, bus stops, and bus routes are integral to this plan. We will consult on the wider proposals of this route in the future.

What cycle facilities are planned as part of this project? A new segregated bi-directional cycle track is proposed through the playing field that will improve access to the park and link to the Wellfield Road Pop-up cycleway, as well as Albany Road, which was recently consulted on as part of the Red Route. The Red Route has been renamed as the Roath Park Cycle Route. The route will be developed in the future and other connections could be added as part of Cardiff's Active Travel Network Map ATNM; these would require further engagement with Local Councillors, Businesses and Residents.

What is the wider route alignment? We are still developing the route, however it is likely that the proposals will follow a route via Richmond Road, Albany Road, Wellfield Road, Ninian Road and Lake Road West. We will consult on the wider route in the future.

Can you remove the priority narrowings? As part of the scheme's development, we are planning to upgrade the priority narrowings on Ty Draw Road to tabled (humped) crossing facilities that maintain low vehicle speeds, but allow two-way traffic flow. An additional speed table is also being proposed near Alder Road. Ty Draw Road has been identified as a secondary route as part of the ATNM, therefore we are seeking to make the environment more conducive to Active Travel.

Why can't the funding be used to fill in potholes? The Council receives separate funding to address maintenance issues.

What about traffic moving around the area and network? The City Centre and City as a whole will see significant changes in the future, in particular the promotion of active and sustainable travel measures. As part of our assessment work, we will look at what other traffic management measures we should include, such as more facilities for pedestrians and cyclists, bus priority and Smart Corridors to control traffic flow. More information about our current plans are on the Council's website and within the Cardiff's Transport White Paper. Visit: www.cardiff.gov.uk or [Transport White Paper \(cardiff.gov.uk\)](http://Transport White Paper (cardiff.gov.uk))