

21st Century Schools Consultation Document 2020

WELSH-MEDIUM PRIMARY AND SECONDARY SCHOOL CATCHMENT AREA CONSULTATION DOCUMENT

16 January – 26 February 2020



Mae'r ddogfen hon ar gael yn Gymraeg / This document is available in Welsh.
This document can be made available in Braille.
Information can also be made available in other community languages
if needed. Please contact us on **029 2087 2720** to arrange this.



Contents

| | |
|---|-----------|
| Introduction | 02 |
| What are we proposing to do? | 02 |
| Welsh-medium PRIMARY school catchment areas background | 03 |
| • Why are these changes proposed to primary school catchment areas?..... | 03 |
| • What changes are proposed to primary school catchment areas? | 04 |
| • How would the number of pupils in each catchment area change?..... | 05 |
| • Map 1 - Current primary school catchment areas..... | 07 |
| • Map 2 - Primary school catchment area changes – Option A..... | 09 |
| • Map 3 - Primary school catchment area changes – Option B..... | 11 |
| • How would children with brothers or sisters residing in these areas be affected?..... | 13 |
| • What are the potential benefits/advantages of the primary school proposals?..... | 13 |
| • What are the potential disadvantages of the primary school proposals?..... | 14 |
| Welsh-medium SECONDARY school catchment areas background | 15 |
| • Why are these changes proposed to secondary school catchment areas? | 15 |
| • What are the current secondary school catchment areas?..... | 15 |
| • What changes are proposed to primary school catchment areas?..... | 16 |
| • How would the number of pupils in each catchment area change? | 17 |
| • Map 4 - Current Secondary school catchment areas..... | 19 |
| • Map 5 - Secondary school catchment area changes – Option A..... | 21 |
| • Map 6 - Secondary school catchment area changes – Option B..... | 23 |
| • What are the potential benefits/advantages of the secondary school proposals? | 25 |
| • What are the potential disadvantages of the secondary school proposals? | 25 |
| Learner Travel Arrangements | 25 |
| Impact of the proposal on the Welsh Language | 26 |
| Equalities | 26 |
| What happens next? | 26 |
| How can I give my views on the proposed changes? | 26 |

Introduction

This booklet is for parents/carers, school staff, school governors and anyone who has an interest in education in Cardiff. It sets out some changes we are proposing and the reasons for suggesting them. We want everyone to understand the information so you can tell us what you think.

What are we proposing to do?

The Council is proposing, for the 2021/22 school year, to make changes to some Welsh-medium primary school catchment areas, and to each of the Welsh-medium secondary school catchment areas.

We have two main aims:

- To establish a new catchment area for Ysgol Gynradd Gymraeg Hamadryad and improve the balance in the number of pupils and places in nearby primary school catchment areas
- To balance the number of pupils and places in each secondary school catchment area.

The Council has worked closely with its partners on the Cardiff Welsh Education Forum to identify changes to catchment areas that would provide a sustainable, strategic solution to support the growth of Welsh-medium education in Cardiff.

Changes proposed to primary school catchment areas, and the reasons for these, are set out on pages 3 to 14.

Changes proposed to secondary school catchment areas, and the reasons for these, are set out on pages 15 to 25.

Welsh-medium primary school catchment areas

Background

The number of children entering Welsh-medium primary education city-wide fluctuated between 2009/10 to 2016/17. Consistent with the overall population, the number of children entering Welsh-medium education was on an upward trend. The number of children entering Welsh-medium reception classes city-wide peaked in 2016/17 at 744 pupils.

Following a fall in the birth rate in 2012/13, the number of children entering reception has also fallen in recent years. In October 2019, there were 684 pupils enrolled in Welsh-medium Reception classes city-wide, compared to 840 places available.

The number of children entering Reception from existing housing city-wide is projected to fall further in the period 2021-2023, consistent with a further fall in the birth rate. As a proportion of the total population within the cohort entering primary education, the percentage within Welsh-medium schools and classes has fluctuated between 15.9% and 17.8% in the period 2009/10 – 2018/19.

As the total number of families applying for places has reduced, there is more than 15% surplus places available at entry to Welsh-medium primary schools. This means that if the trends change and more of the population choose Welsh-medium education there continues to be a reasonable level of surplus places to accommodate families throughout Cardiff.

The Council is therefore well placed to increase the percentage of pupils taking up places in Welsh-medium education. The 840 places available at entry to Reception Year could accommodate up to 22% of the projected population. However, further growth in the sector would be supported by changes to some catchment areas.

Why are these changes proposed to primary school catchment areas?

Ysgol Gynradd Gymraeg Hamadryad was established in 2016, and was intended to serve the communities of Butetown and South Grangetown. The school was temporarily accommodated on the Ninian Park Primary School site in Grangetown, within the catchment area of Ysgol Gymraeg Pwll Coch.

The school transferred to its current site in Butetown in the 2018/19 school year, which lies within the catchment area of Ysgol Mynydd Bychan.

Butetown and Grangetown are currently within the primary school catchment areas of Ysgol Gymraeg Pwll Coch and Ysgol Mynydd Bychan. Since the establishment of Ysgol Gynradd Gymraeg Hamadryad, the school had admitted most of its pupils from Grangetown. Few pupils in Butetown attend Welsh-medium education.

The establishment of a catchment area for Ysgol Gynradd Gymraeg Hamadryad, and associated amendment of other catchment areas, would allow local families to better understand the school options available and would allow more parents to be able to access a local place.

The changes proposed to other primary school catchment areas would provide a better balance between the number of places available in schools and the number of children in each area.

What changes are proposed to primary school catchment areas?

The Council is proposing to:

- Create a catchment area for Ysgol Gynradd Gymraeg Hamadryad, and an improved balance of pupils/ places, by
 - Transferring parts of the Ysgol Mynydd Bychan catchment and parts of the Ysgol Gymraeg Pwll Coch catchment, to form a catchment area for Ysgol Gynradd Gymraeg Hamadryad
 - Transferring part of Ysgol Gymraeg Treganna catchment to Ysgol Gymraeg Pwll Coch
 - Transferring part of Ysgol Nant Caerau catchment area to Ysgol Gymraeg Treganna

The map on page 7 displays the current catchment areas of each of the primary schools for whom a change is proposed.

The Council is consulting on two options, for changes to primary school catchment areas:

- Primary changes Option A on page 9
- Primary changes Option B on page 11

How would the number of pupils in each catchment area change?

The Council is able to project the number of children in each area of the city who are likely to take up places in Welsh-medium, English-medium and Faith-based primary schools. The Council analyses population data for children resident in each area, and the recent take up of places as submitted by schools within their annual school census (PLASC).

Current primary school catchment areas

The below table sets out the number of Reception age pupils enrolled in Welsh-medium schools and classes areas along with the number of children in these areas that are projected to take up places in future years based on current catchment areas.

| Table 1: Reception age pupils enrolled in Welsh medium schools and classes in each primary school catchment area, and the number of children projected to take up places in future years. | | | | | | | | |
|---|------------------|---------------------|------------|------------|-------------------|------------|------------|------------|
| Catchment area | Admission Number | PLASC (census) data | | | Projected take up | | | |
| | | 2016/2017 | 2017/2018 | 2018/2019 | 2019/2020 | 2020/2021 | 2021/2022 | 2022/2023 |
| Ysgol Gynradd Gymraeg Hamadryad | 60 | N/a | N/a | N/a | N/a | N/a | N/a | N/a |
| Ysgol Gymraeg Nant Caerau | 30 | 40 | 32 | 33 | 37 | 32 | 31 | 29 |
| Ysgol Gymraeg Pwll Coch | 60 | 63 | 51 | 51 | 53 | 58 | 46 | 44 |
| Ysgol Gymraeg Treganna | 90 | 82 | 94 | 97 | 72 | 83 | 74 | 73 |
| Ysgol Mynydd Bychan | 30 | 34 | 42 | 41 | 37 | 44 | 37 | 38 |
| Total | 270 | 219 | 219 | 222 | 199 | 217 | 188 | 184 |

There are over 100 children attending Ysgol Gynradd Gymraeg Hamadryad currently. As the school does not have a catchment area, those children are included in the catchment areas of other schools.

Primary school catchment area changes – Option A

Table 2 below sets out the number of Reception age children projected to take up places in Welsh medium schools and classes in each primary school catchment areas, if **Option A** were implemented. If the changes were implemented, they would take effect from 2021/22.

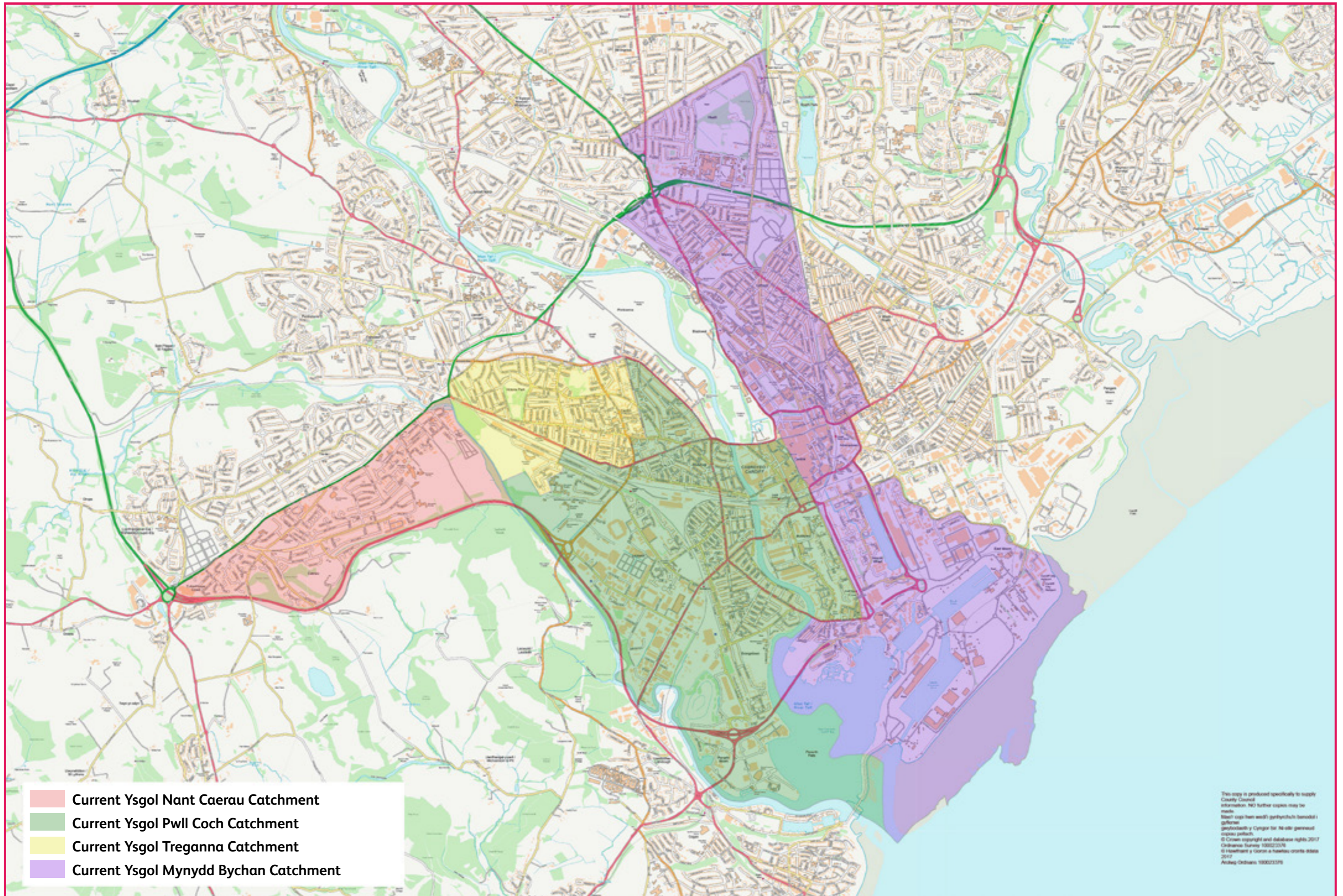
| Table 2: The number of Reception age children projected to take up places in Welsh medium schools and classes in each primary school catchment area, if Option A were implemented, | | | | | |
|--|------------------|-------------------|------------|------------|------------|
| Catchment area | Admission Number | Projected take up | | | |
| | | 2019/2020 | 2020/2021 | 2021/2022 | 2022/2023 |
| Ysgol Gynradd Gymraeg Hamadryad | 60 | N/a | N/a | 27 | 26 |
| Ysgol Gymraeg Nant Caerau | 30 | 37 | 32 | 25 | 23 |
| Ysgol Gymraeg Pwll Coch | 60 | 53 | 58 | 44 | 43 |
| Ysgol Gymraeg Treganna | 90 | 72 | 83 | 59 | 58 |
| Ysgol Mynydd Bychan | 30 | 37 | 44 | 33 | 34 |
| Total | 270 | 199 | 217 | 188 | 184 |

Primary school catchment area changes – Option B

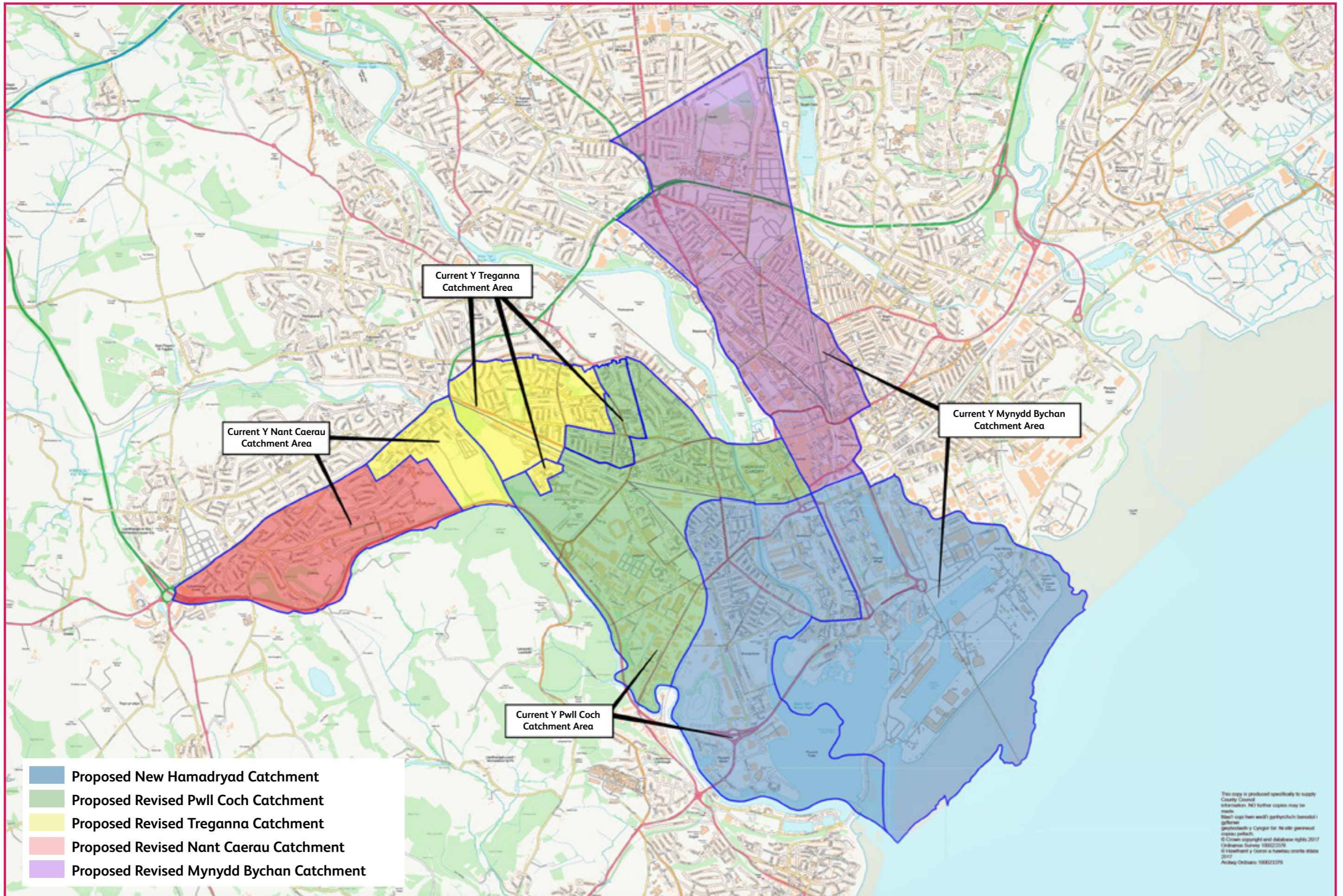
Table 3 below table sets out the number of Reception age children projected to take up places in Welsh medium schools and classes in each primary school catchment areas, if **Option B** were implemented. If the changes were implemented, they would take effect from 2021/22.

| Table 3: The number of Reception age children projected to take up places in Welsh medium schools and classes in each primary school catchment area, if Option B were implemented, | | | | | |
|--|------------------|-------------------|------------|------------|------------|
| Catchment area | Admission Number | Projected take up | | | |
| | | 2019/2020 | 2020/2021 | 2021/2022 | 2022/2023 |
| Ysgol Gynradd Gymraeg Hamadryad | 60 | N/a | N/a | 27 | 26 |
| Ysgol Gymraeg Nant Caerau | 30 | 37 | 32 | 25 | 23 |
| Ysgol Gymraeg Pwll Coch | 60 | 53 | 58 | 38 | 37 |
| Ysgol Gymraeg Treganna | 90 | 72 | 83 | 65 | 64 |
| Ysgol Mynydd Bychan | 30 | 37 | 44 | 33 | 34 |
| Total | 270 | 199 | 217 | 188 | 184 |

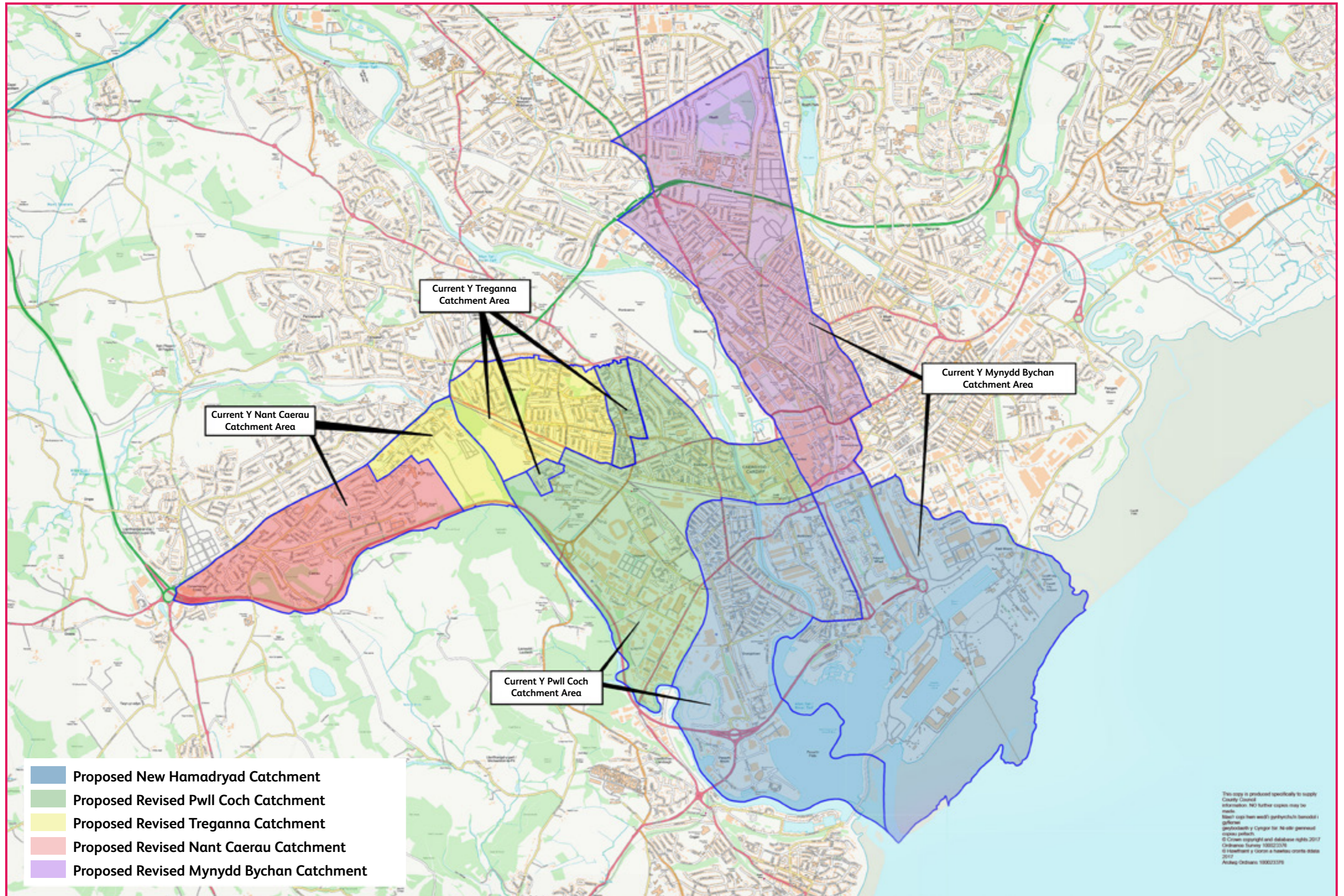
Map 1 - Current primary school catchment areas



Map 2 - Primary school catchment area changes – Option A



Map 3 - Primary school catchment area changes – Option B (As Option A, but with alternative boundary between Ysgol Pwll Coch and Ysgol Treganna)



How would children with brothers or sisters residing in these areas be affected?

All parents/ guardians would still retain the right to apply for the admission of their children to any of these schools. If a school is not fully subscribed, then all applicants (with the exception of twice excluded pupils) are offered a place.

Where a community primary school is oversubscribed, applications received by the published closing date are considered in accordance with the oversubscription criteria set by the Council in order of priority.

The Council's admissions policy gives higher priority to children who live within the catchment area of a school, than to those who live outside of the catchment.

Children with brothers or sisters attending a school also get a higher priority than other children without brothers or sisters attending.

For parents/ guardians who:

- have an older brother or sister attending a school, and
- who would no longer live in the catchment area of their older child's school as a result of the changes proposed in this consultation,

the Council will give priority over siblings of other children outside of the catchment area, and over other children who live outside of the catchment area.

For parents/ guardians who:

- have an older brother or sister attending a school without a catchment area (for example, Ysgol Hamadryad),

the Council will also give priority over other children who live outside of the catchment area.

You can view the Council's school admissions policy for 2019/20 and for 2020/21 at www.cardiff.gov.uk/schooladmissions

What are the potential benefits / advantages of the primary school proposals for families?

If the changes were implemented, the following benefits are expected to be achieved:

- providing a better balance between the number of children and the number of places serving each area
- increasing the percentage of children who are able to gain a place at their local Welsh-medium school

- increasing the percentage of children who are able to gain a place at their preferred Welsh-medium school
- reducing the overall distance that children travel to their local Welsh-medium school
- supporting Cardiff in making its contribution to meeting the national Cymraeg 2050 targets, by
 - enabling an increase in the percentage of Cardiff children entering Welsh-medium primary education
 - enabling an increase in the percentage of Cardiff children transferring to Welsh-medium secondary education

The majority of pupils affected by the change would be within closer proximity to their proposed catchment area school than they are at present. This would increase the likelihood of children gaining admission to their catchment area school.

- Almost all addresses within the proposed catchment area of Ysgol Gynradd Gymraeg Hamadryad are in closer proximity to the school than to other Welsh-medium primary schools.
- Almost all addresses within the part of the Ysgol Nant Caerau catchment area proposed to transfer to the Ysgol Treganna catchment area are in closer proximity to Ysgol Treganna.
- Overall, the changes would improve the balance between the number of children and the number of places serving each area, and would increase the percentage of children who are able to gain a place at their local Welsh-medium primary school.

What are the potential disadvantages of the primary school proposals?

- Some addresses within Canton and Riverside, which are proposed to transfer from the catchment area of Ysgol Treganna to Ysgol Pwll Coch, are further from Ysgol Pwll Coch than from the current catchment area school of Ysgol Treganna. However, the increased distance for any of these addresses is less than 0.3 miles.
- Families living in the areas transferred would be considered under a lower priority oversubscription criteria if their address is longer within the catchment area of their preferred school. However, the admissions arrangements for those primary age pupils with siblings enrolled in the school give them higher priority over siblings of other children outside of the catchment area and over other children who live outside of the catchment area.

Welsh-medium secondary school catchment areas

Background

The number of children entering Welsh-medium secondary education city-wide increased steadily over the period 2009/10 to 2018/19.

The number of children entering Welsh-medium secondary education reached 603 pupils in September 2019, marginally exceeding the capacity of 600 places. This exceeded the projected intake owing to an increase of pupils transferring from English-medium primary education, compared to previous years.

The intake to Welsh-medium secondary education is projected to be at a similar level in September 2020. An increase in the Admission Number at Ysgol Gyfun Gymraeg Plasmawr, from 180 places to 210 places, has been agreed. This provides sufficient places for the projected take-up from within its catchment, and some surplus places.

Projections taking account of pupils within primary schools suggest that the number of pupils entering Welsh-medium secondary education will increase further until the 2023/2024 school year. Consistent with the pattern within primary education, where reduced intakes have followed a fall in the birth rate, intakes to secondary education are projected at a lower level from 2024/2025.

Why are these changes proposed to secondary school catchment areas?

The projected demand for places in future years within the Ysgol Gyfun Gymraeg Glantaf catchment area exceeds the number of places available. The changes proposed to the catchment area boundary between Ysgol Gymraeg Pwll Coch and Ysgol Gymraeg Treganna would exacerbate this issue.

The projected demand for places in future years within the Ysgol Gyfun Gymraeg Bro Eder catchment area is approximately 45 pupils lower than the number of places available in each year group.

The distribution of pupils does not fit well with the number of places available at entry to each school. This means that some families are uncertain about their likelihood of admission to their catchment area school.

What are the current secondary school catchment areas?

Each Welsh-medium secondary school catchment area is made up of several Welsh-medium primary school catchment areas.

The existing primary school catchment areas within each secondary school catchment area are set out below.

| Ysgol Gyfun Gymraeg Bro Eder | |
|-----------------------------------|------------------------------|
| Ysgol Bro Eirwg | Ysgol Pen Y Pil |
| Ysgol Gynradd Gymraeg Pen Y Groes | Ysgol Y Berllan Deg |
| Ysgol Gyfun Gymraeg Glantaf | |
| Ysgol Glan Ceubal | Ysgol Glan Morfa |
| Ysgol Mynydd Bychan | Ysgol Gymraeg Pwll Coch |
| Ysgol Pencae | Ysgol Gymraeg Melin Gruffydd |
| Ysgol Y Wern | |
| Ysgol Gyfun Gymraeg Plasmawr | |
| Ysgol Gymraeg Coed Y Gof | Ysgol Gynradd Creigiau |
| Ysgol Gynradd Gwaelod Y Garth | Ysgol Gymraeg Nant Caerau |
| Ysgol Gymraeg Treganna | |

What changes are proposed to secondary school catchment areas?

We are proposing to:

- Transfer the Ysgol Glan Morfa catchment from Ysgol Gyfun Gymraeg Glantaf to Ysgol Gyfun Gymraeg Bro Eder
- Amend the boundary between the catchment areas of Ysgol Gyfun Gymraeg Glantaf and Ysgol Gyfun Gymraeg Plasmawr, at the primary school boundary between Ysgol Pwll Coch and Ysgol Treganna

The proposed creation of a catchment area for Ysgol Gynradd Gymraeg Hamadryad would place its catchment area within the secondary school catchment of Ysgol Gyfun Gymraeg Glantaf.

The map on page 19 displays the current catchment areas of the Welsh-medium secondary schools.

The Council is consulting on two options, for changes to secondary school catchment areas:

- Secondary changes Option A on page 21
- Secondary changes Option B on page 23

Each of these options proposes the transfer of Ysgol Glan Morfa from Ysgol Gyfun Gymraeg Glantaf to Ysgol Gyfun Gymraeg Bro Eder. The proposed changes to the boundary between the catchment areas of Ysgol Gyfun Gymraeg Glantaf and Ysgol Gyfun Gymraeg Plasmawr are consistent with the options proposed for changes to the primary school.

How would the number of pupils in each catchment area change?

Current secondary school catchment areas

The below table sets out the number of pupils enrolled at entry to Year 7 in Welsh medium secondary schools in each of the current catchment areas, and the number of children in these areas projected to take up places in future years.

| Catchment area | Admission Number | PLASC (census) data | | | Projected | | | | | |
|------------------------------|------------------|---------------------|------------|------------|------------|------------|------------|------------|------------|------------|
| | | 2016/2017 | 2017/2018 | 2018/2019 | 2019/2020 | 2020/2021 | 2021/2022 | 2022/2023 | 2023/2024 | 2024/2025 |
| Ysgol Gyfun Gymraeg Bro Eder | 180 | 119 | 127 | 139 | 140 | 141 | 133 | 121 | 147 | 121 |
| Ysgol Gyfun Gymraeg Glantaf | 240 | 226 | 229 | 233 | 272 | 246 | 274 | 256 | 281 | 289 |
| Ysgol Gyfun Gymraeg Plasmawr | 210 | 146 | 186 | 170 | 174 | 199 | 184 | 202 | 197 | 198 |
| Total | 630 | 491 | 542 | 542 | 586 | 586 | 591 | 579 | 625 | 608 |

As the above table shows, the total number of places is sufficient for the total projected pupil population. However, if there were no changes made, some families would potentially be unable to gain admission to their catchment area secondary school.

Secondary school catchment area changes – Option A

Table 5 below sets out the number of pupils enrolled at entry to Year 7 in Welsh medium secondary schools in each of the current catchment areas, and the number of children in these areas projected to take up places in future years, if Ysgol Glan Morfa transferred to Ysgol Bro Eder, and the boundary amendment in Option A were implemented.

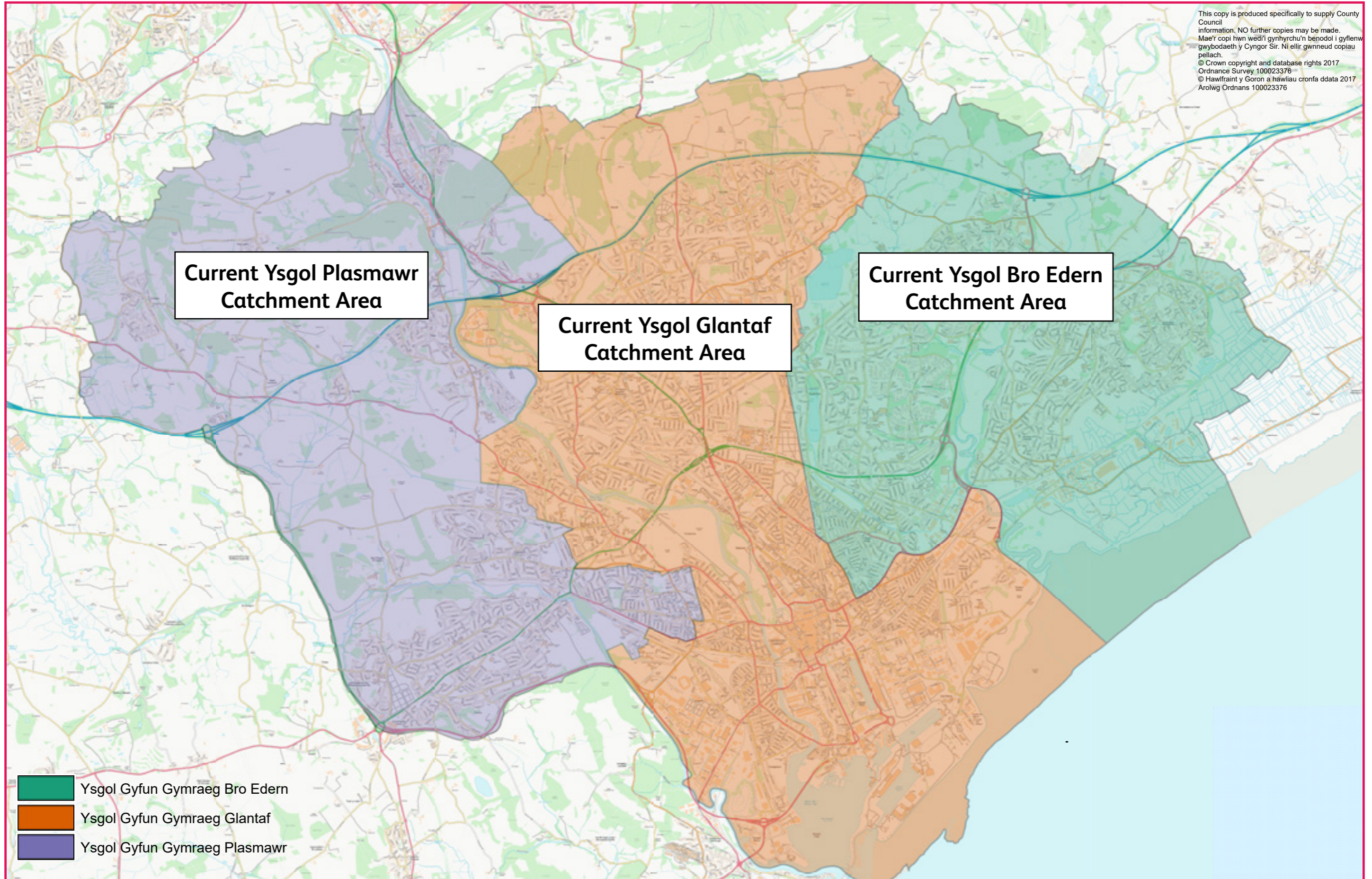
| Catchment area | Admission Number | PLASC (census) data | | | Projected | | | | | |
|------------------------------|------------------|---------------------|------------|------------|------------|------------|------------|------------|------------|------------|
| | | 2016/2017 | 2017/2018 | 2018/2019 | 2019/2020 | 2020/2021 | 2021/2022 | 2022/2023 | 2023/2024 | 2024/2025 |
| Ysgol Gyfun Gymraeg Bro Eder | 180 | 119 | 127 | 139 | 140 | 141 | 156 | 143 | 179 | 153 |
| Ysgol Gyfun Gymraeg Glantaf | 240 | 226 | 229 | 233 | 272 | 246 | 271 | 252 | 268 | 278 |
| Ysgol Gyfun Gymraeg Plasmawr | 210 | 146 | 186 | 170 | 174 | 199 | 164 | 184 | 178 | 177 |
| Total | 630 | 491 | 542 | 542 | 586 | 586 | 591 | 579 | 625 | 608 |

Secondary school catchment area changes – Option B

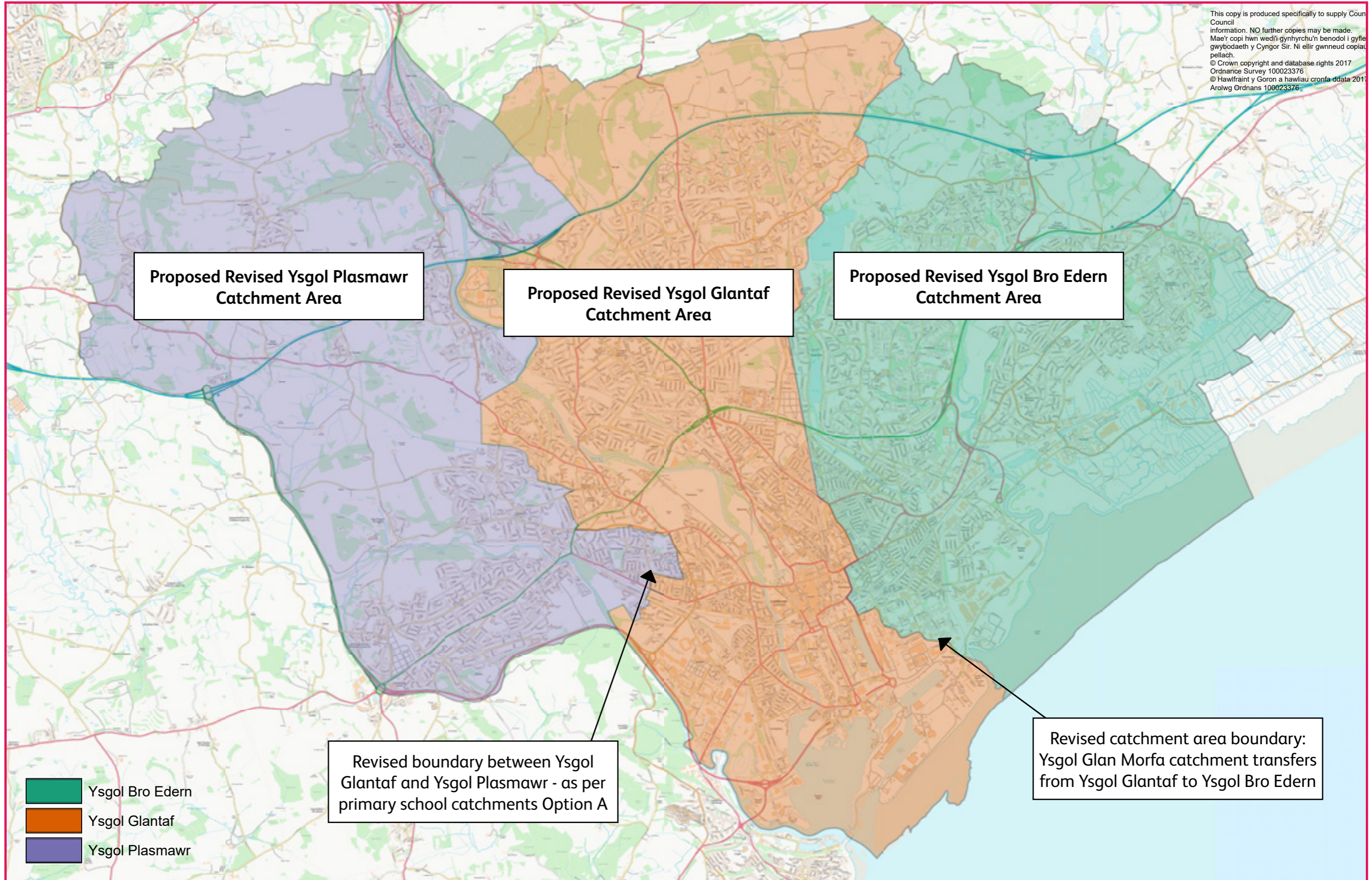
Table 6 below sets out the number of Reception age children projected to take up places in Welsh medium schools and classes in each primary school catchment area, and the number of children in these areas projected to take up places in future years, if Ysgol Glan Morfa transferred to Ysgol Bro Eder, and the boundary amendment in Option B were implemented.

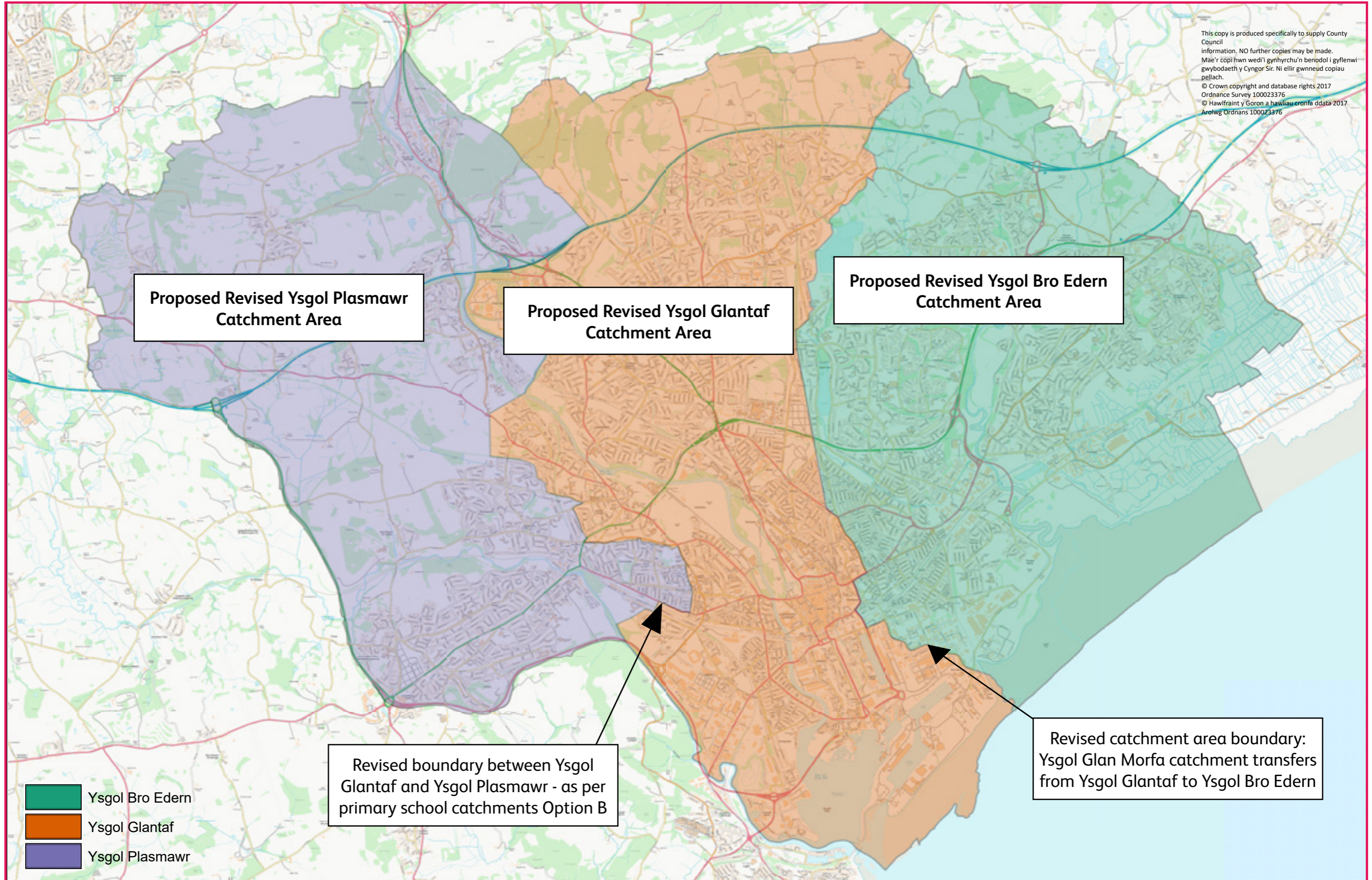
| Catchment area | Admission Number | PLASC (census) data | | | Projected | | | | | |
|------------------------------|------------------|---------------------|------------|------------|------------|------------|------------|------------|------------|------------|
| | | 2016/2017 | 2017/2018 | 2018/2019 | 2019/2020 | 2020/2021 | 2021/2022 | 2022/2023 | 2023/2024 | 2024/2025 |
| Ysgol Gyfun Gymraeg Bro Eder | 180 | 119 | 127 | 139 | 140 | 141 | 156 | 143 | 179 | 153 |
| Ysgol Gyfun Gymraeg Glantaf | 240 | 226 | 229 | 233 | 272 | 246 | 265 | 247 | 263 | 272 |
| Ysgol Gyfun Gymraeg Plasmawr | 210 | 146 | 186 | 170 | 174 | 199 | 170 | 189 | 183 | 183 |
| Total | 630 | 491 | 542 | 542 | 586 | 586 | 591 | 579 | 625 | 608 |

Map 4 - Current Secondary school catchment areas



Map 5 - Secondary school catchment area changes – Option A





What are the potential benefits / advantages of the secondary school proposals for families?

- All addresses within the primary school catchment area of Ysgol Glan Morfa, which is proposed to transfer from the catchment area of Ysgol Gyfun Gymraeg Glantaf to the catchment area of Ysgol Gyfun Bro Edern, are in closer proximity to Ysgol Gyfun Gymraeg Bro Edern than to Ysgol Gyfun Gymraeg Glantaf. Journey distances, from home to school, would significantly reduce.
- All addresses within the areas of Canton and Riverside which are proposed to transfer from the catchment area of Ysgol Gyfun Gymraeg Plasmawr to the catchment area of Ysgol Gyfun Glantaf, are in closer proximity to Ysgol Gyfun Gymraeg Glantaf than to Ysgol Gyfun Gymraeg Plasmawr. Journey distances, from home to school, would reduce.
- Overall, the changes would improve the balance between the number of children and the number of places serving each area
- The percentage of children who are able to gain a place at their local Welsh-medium secondary school would increase.

What are the potential disadvantages of the secondary school proposals?

- Some children will be considered under a lower priority oversubscription criteria as a result of their address no longer being within the catchment area of their preferred school. Parents could still state a preference for admission to any school and, subject to sufficient places being available, could still gain admission.
- Children within the primary school catchment area of Ysgol Glan Morfa currently receive free home to school transport to Ysgol Gyfun Gymraeg Glantaf, as this is their catchment area school and it is more than three miles from their home address. This arrangement would be phased out for pupils entering secondary education from September 2021.

Learner Travel Arrangements

There are no plans to change the Council's policy on the transport of children to and from school.

Any pupils affected by this proposal would be offered the same support with transport as is provided throughout Cardiff and in line with the same criteria that apply across Cardiff.

The Council's transport policy for school catchment areas is available on the Council's website (www.cardiff.gov.uk)

Revised boundary between Ysgol Glantaf and Ysgol Plasmawr - as per primary school catchments Option A

Impact of the proposal on the Welsh Language

It is anticipated that there will be a positive impact on the Welsh Language as a result of these proposals. The proposed changes outlined in this document align with aims of Cardiff's Welsh in Education Strategic Plan, and support the Welsh Government's strategy for the Welsh language by contributing to meeting the targets set out in the Cymraeg 2050 strategy. The proposal seeks to implement the changes in such a way that the potential for negative impact on any schools is limited.

Equalities

An Equality Impact Assessment (EIA) is a process that looks at a policy or scheme to make sure it does not discriminate against anyone based on the protected characteristics set out in the Equality Act 2010.

An Equality Impact Assessment has been carried out and this concluded that the proposed changes would not negatively affect a particular group in society. The assessment will be reviewed after the consultation.

What happens next?

The Council will collect and summarise the feedback from this consultation. Council officers will then report this to the Council's Cabinet.

The Cabinet must determine admissions arrangements for the 2021/22 school year by 15th April 2020.

After determination of the admissions arrangements, they will be published on the Council's website at www.cardiff.gov.uk/schooladmissions

How can I give my views on the proposed changes?

You can provide submit your views

- by e-mail to schoolresponses@cardiff.gov.uk, or
- by post to School Organisation Planning, Room 122, County Hall, Cardiff, CF10 10W

Revised catchment area boundary: Ysgol Glan Morfa catchment transfers from Ysgol Glantaf to Ysgol Bro Edern

Should you have any questions please contact the School Organisation Planning Team using the contact details above or by telephone on (029) 2087 2720.

The closing date for responses to the consultation is **26 February 2020**.

Mae'r ddogfen hon ar gael yn Gymraeg / This document is available in Welsh.

This document can be made available in Braille.
Information can also be made available in other community languages
if needed. Please contact us on **029 2087 2720** to arrange this.

